



Life Care
SURGICALS & PHARMA



ARLET Towers, Murinjapalam Jn., Medical College P. O.
Thiruvananthapuram-695 011, Kerala, India,
Ph: +91 9387506000, +91 9497506000
E-mail: caretvpm@gmail.com
www.lifecareindia.in

Contents

- Bones And Skeleton - 01
- Human Torso Models - 11
- Muscular models - 12
- Organs Models - 14
- Dental Models - 24
- Diseased Models - 25
- Laerdal Models - 31
- Gynecology Models - 33
- Intubation Models - 42
- Injection Models - 43
- Suture Training Models - 47
- Catheterization Models - 50
- Medical Training Models - 51
- Nursing Training Models - 56
- CPR Training Manikins - 66
- AED Trainers - 72
- Fluoroscopy Trainers - 73
- New Products - 74

LC-101 Human Skeleton Life Size 180 CMS.



A full-size human skeleton model on stand, articulated to allow demonstration of basic movements, and features a vertebral artery and herniated lumbar disc (slipped disc). The skull part of the skeleton includes a movable jaw, cut calvarium (top of skull), suture lines, and 3 removable lower teeth. It is a pelvic mounted skeleton and the arms and the legs are removable for study if required, and the skeleton can also be easily removed from its stand. It is also possible to hang this model from top of the skull if required (mounting not provided). The plastic skeleton comes with a stand, and the 5 caster stand ensures a stable and movable base. A hard wearing and washable skeleton reproduction.

LC-101A Life Size Skeleton With Ligaments And Painted Muscles



The model is anatomically correct. All over 200 bones, anatomical details and structures are represented. The joints are movable. Arms and legs can be removed easily via simple screw connections. The skull is removable and consists of the base of skull, Calvarium, jaw (on spring). Features nerve branches, vertebral artery & herniated lumbar disc. The model is made of high quality PVC and therefore durable and easy to clean. The skeleton is assembled. Minor assembly can be done within a few minutes without tools. Special feature. The left side of the skeleton shows the points of origin (red) and the points of insertion (blue) of the muscles. With flexible ligaments on right side makes it possible to demonstrate all kinds of human movement of the arm and leg.

LC-102 Skeleton 85 CMS.



Ideal for studying the structure and function of the many bones of the human body, Extremely detailed. The model features movable joints to demonstrate and study the movement of joint giving it a life like feel, Placed on stand for perfect display and demonstration. The model is made of high quality PVC.

LC-102B 85CMS. Skeleton With Nerves And Blood Vessels



This educational teaching skeleton model depicts the position, course and distribution of main arteries and peripheral nerves of the human body. Detailed enough to satisfy students, doctors or anyone interested in the human skeleton. Removable calvarium. Size: 85cm.

LC-103 Mini Human Skeleton (Tall 42 CMS)



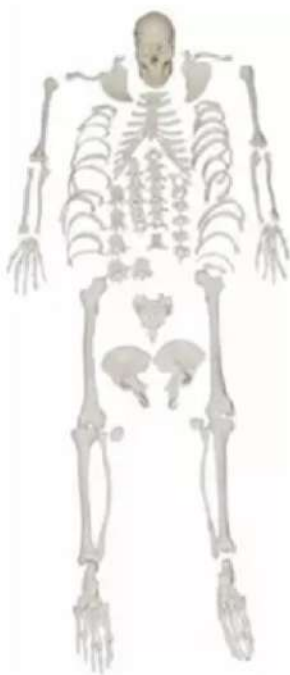
This most popular miniature skeleton model offers a unique hands-on learning experience for young scientist, curious kids or medical professionals. Special features include a movable jaw, removable calvarium, arms and legs that are removable for individual study. Size: 42CM.

LC-1224 Fetus Skeleton



This life size model of fetus skeleton is made from high quality PVC. Every part is made in a manner so that all joints can move freely.

LC-130 Disarticulated Human Skeleton (Bilateral) (200 Bones) Bone Set For Medical Students



Size: Life Size.
Disarticulated adult human skeleton is useful for students to learn various bones. The skull includes movable jaw, cut calvarium, suture lines and 3 removable lower teeth. The left hand and left foot are on wire About 200 different bones. Made of PVC plastic. Packing: 1pcs/carton, 63x28x20cm, 9kgs.

LC-130B Disarticulated Skeleton (Bilateral) With Painted Muscles



Size: Life Size. With muscles painted on one side of the skeleton. Dis-articulated adult human skeleton is useful for students to learn various bones. The skull includes movable jaw, cut calvarium, suture lines and 3 removable lower teeth. The left hand and left foot are on wire. About 200 different bones. Made of PVC plastic. Packing: 1pcs/carton, 63x28x20cm, 9kgs.

LC-104 Adult Skull (Life Size)

The life size skull model features a movable jaw on a spring with 3 removable teeth (incisor, cuspid and molar), ideal for study of the mouth and teeth. The top of the calvarium is removable to reveal the interior and brain cavity, with internal bone structures visible.



LC-104C Adult Coloured Skull (Life Size)

This is an advanced model of life-size skull, bones painted in different colors for precise study. Can be disassembled into 3 parts. Made of PVC plastic, natural size.



LC-104-1 Disarticulated Skull

This highly detailed Human Skull model is disarticulated into many sections. The calvarium is sectioned horizontally with the lower jaw hinged. The basal portion of the skull has been sectioned sagittally.



LC-1201PN Skull With Painted Muscles

Separates into 3 parts; the skull cap and mandible are removable. Features hand painted muscle origins in red, and insertions in blue.



LC-104E Skull With 8 Part Brain

Consists of life-size skull model with an 8-part brain nested within the skull. The frontal and parietal lobe, temporal and occipital lobe, encephalic trunk and cerebellum are all identifiable on the brain model. The skull shows bony details such as fissures and foramens, has a movable jaw and 3 removable teeth.



LC-135 Skull With Cervical Spine

Life size model of human skull on cervical spine. Cervical spine is shown with seven cervical intervertebral discs, cervical nerves, vertebral arteries, basilar artery and rear cerebral arteries. Skull is dissectible into 3 parts with moveable jaw, cut calvarium.



LC- 121 Fetal Skull



Life Fetal Skull is detailed to show the major structure of different bones of the skull. The mandible is spring hanged to view the bone structures of the mouth. This model is lifelike and is made of PVC Plastic. Size: 10x8x10 cms.

LC-A11115 Infant Skull



The anatomical lines where the bony plates of the skull join together can be easily felt in the newborn infant. The diamond shaped space on the top of the skull and the smaller space further to the back are often referred to as the "soft spot" in young infants. Made with advanced PVC material.

LC-123 Adult Male Pelvis



Consists of 2 upper parts of ilium, sacrum and coccyx, fourth and fifth lumbar vertebra as well as disc and symphysis.

Life size, made of advanced PVC.

LC-124 Adult Female Pelvis



It shows the following: Pelvis shapes: Short and broad, Pelvis cava: Like a barrel, Aperture pelvis superior: Rounded, Sacrum: Broad and short with little flexibility, Angles of pelvis arch: 90-100 degree, Symphysis pubica: Short and broad.

LC-125 Adult Female Pelvis with Muscles and Organs

This model helps to get an integral knowledge of various important structures, such as pelvic muscles and pelvic organs as a whole. This model is made of PVC Plastic. Life size.



LC-127 Birth Demonstration Model

This model consists of 2 innominate bones, sacrum, coccyx, with fetal skull which is firmly connected to the model by means of a flexible metal tube which can be fixed in every position. It facilitates the study of natural birth. Life size.



LC-125A Female Pelvis with Muscles, Organs and Nerves Model



Removable organs.
Highly detailed to show the vessels, ligaments, nerves, pelvic floor muscles and female pelvic organs. Detachable pelvis model illustrates the anatomy of the female pelvis more clearly.
Material: PVC Plastic

LC-15107-2 Male Pelvis with Genital and Vascular Nerve Model



This Model consists of 2 parts. Life size.
Made of PVC Plastic.

LC-124A Flexible Adult Female Pelvis

Shown in accurate detail, this pelvis model can be manipulated to demonstrate how the pelvis moves to accommodate delivery. Flexible anatomy allows exaggerated movements for presenting to a group. Three separate bone segments are joined together with flexible cord, helping viewers visualize how the pelvic bones flex during birth.



LC -126 Life Size Vertebral Column with Pelvis and Femur Heads (85 cms.)



This highly detailed life-size model shows all significant features of each vertebrae, including spinal cord, nerve roots, the vertebral artery, a herniated disc and vertebral notch etc. Ideal teaching models for students, patient education by chiropractors, orthopedic surgeons and other medical professionals. Special features include: 29" tall vertebral column complete with pelvis, femur heads, sacrum, occipital bone, vertebral artery, all nerve branches and herniated lumbar disc. Comes with deluxe chrome stand.

LC -126A Didactic Flexible Coloured Life-Size Spine with Pelvis



The spinal cord is color coded for better display. This highly detailed fully-flexible life-size spine model shows all significant features of each vertebrae, including spinal cord, nerve roots, the vertebral artery, a herniated disc and vertebral notch etc. Special features include: 29" tall vertebral column, features different sections of the spinal column in different points: cervical vertebrae, thoracic vertebrae, lumbar vertebrae, sacrum and the coccyx.

LC-126B Life Size Spine with Pelvis



This highly detailed life-size model shows all significant features of each vertebrae, including spinal cord, nerve roots, the vertebral artery, a herniated disc and vertebral notch etc. Ideal teaching models for students, patient education by chiropractors, orthopedic surgeons and other medical professionals. Special features include: 29" tall vertebral column complete with pelvis, sacrum, occipital bone, vertebral artery, all nerve branches and herniated lumbar disc. Comes with deluxe chrome stand.

LC-126C Life Size Spine with Muscles and Disorders



Spinal Curvatures are color-coded, Occipital bone and cerebellum Circle of Willis, Vertebral artery Spinal nerves with sciatic nerve, Right brachial plexus 1st and 2nd ribs Sacroiliac ligaments, Several muscles including: Suboccipital triangle, Longus capitis, Scalene muscles Psoas major and minor Iliacus Gluteus medius and minimus Piriformis, Gemellus. Bone spurs on L5, Herniated disc between L4 & L5, L1, L2 and L3 divide to show compression fractures, osteoporosis, bone tumor Osteoarthritis of the hip Hanging stand included Size: 34".

LC-1223 Mini Spine Model

- 45 cms tall
- Made of PVC Plastic, unbreakable
- Consists of the cervical, thoracic and lumbar vertebrae, sacrum, coccyx, complete pelvis and femur heads.
- Representation of the spinal nerve branches and a prolapsed L3-L4 intervertebral disc.
- Mounted on stand



LC-1223A Mini Coloured Spine Model

- 45 cms tall, Made of PVC Plastic, unbreakable
- Consists of the cervical, thoracic and lumbar vertebrae, sacrum, coccyx, complete pelvis and femur heads.
- The various regions of the vertebral column are color coded for ease of identification
- Representation of the spinal nerve branches and a prolapsed L3-L4 intervertebral disc, Mounted on stand



LC-1223B Mini Flexible Spine Model

- 45 cms tall
- Fully-flexible
- Made of PVC Plastic, unbreakable
- Consists of the cervical, thoracic and lumbar vertebrae, sacrum, coccyx, complete pelvis and femur heads.
- Representation of the spinal nerve branches and a prolapsed L3-L4 intervertebral disc.
- Mounted on stand



LC - 1223C Lumbar Spine with Muscles

- This product can truly reproduce the human spine, with pelvic muscle, disc herniation, spinal nerve and upper femur, is a rare aid to your for practical training.
- Different colors are used to distinguish different positions
- Made of high quality PVC material, it is extremely affordable and durable, with a flexible mounting of the femoral head and pedestal



LC-115 Pelvis with 5 Pcs. Lumbar Vertebrae



Life-size Lumbar Vertebrae are shown with normal intervertebral disc, spinal cord and pelvis.

LC-119 Lumbar Sacrum with Herniated Disc



The model features anatomy of lumbar spine, sacrum, and coccyx and also shows herniated lumbar disc.

LC-133 Cervical Spine with Neck Artery and Occipital Bone Model



Shows the Cervical Vertebral Column with neck artery and nerve roots.

LC-134 Vertebral Osteoporosis Model



Divided lumbar vertebrae with intervertebral discs. The upper section shows healthy bone structure, the middle section osteoporotic bone structure and the lower section advanced osteoporotic bone structure with flattened plates, deformation and decreased bone mass.

LC-120 Thoracic Spinal Column



This spinal replica consists of the 12 thoracic vertebrae with intervertebral discs, thoracic nerves and spinal cord. This quality thoracic spinal column is affordable and anatomically correct. Spinal column delivered on stand.

LC-1504 Disc Prolapse Simulator



Demonstrates the principles of an intervertebral slipped disc in an interactive way; if the two vertebrae are pressed, the prolapse can be seen. Comprises of two lumbar vertebrae and an intervertebral disc.

LC -Deluxe Cervical Model



Features brain stem, occipital bone, atlas and axis through C7, with herniated disc, T1 and T3. This model has a soft cerebellum and full nerve with right side brachial plexus. Muscles include sub occipital triangle, longus capitis, levator scapulae, scalenus medius posterior and anterior.

LC -1505 Lumbar Vertebrae Degeneration Model



LC -109 Shoulder Joint Model with Ligaments

- Life size, , Made of PVC
- Show shoulder joint abduction, adduction, forward tilt, backward tilt and inward/outward rotation.
- It is constructed with flexible plastic ligaments.
- Mounted on a plastic base.



LC -110 Hip Joint Model with Ligaments

- Life size, , Made of PVC
- Accurate representation of the hip joint and its ligaments
- It is constructed with flexible plastic ligaments.
- Mounted on a plastic base.



LC -111 Knee Joint Model with Ligaments

- Life size, , Made of PVC
- Model represents a functional model of knee joint with lateral ligaments, meniscus and patellar ligament
- It is constructed with flexible plastic ligaments
- Mounted on a plastic base



LC -112 Elbow Joint Model with Ligaments

- Life size, , Made of PVC
- Demonstrates flexion, extension, and internal/ external rotation of the radius
- It is constructed with flexible plastic ligaments
- Mounted on a plastic base



LC -113 Foot Joint Model

- Life size, , Made of PVC
- Demonstrate all the foot functionality and the external anatomical structure.
- Mounted on a plastic base



LC -113A Foot Joint Model with Ligaments

- Life size, , Made of PVC
- Demonstrate all the foot functionality and the external anatomical structure
- It is constructed with flexible plastic ligaments
- Mounted on a plastic base.



LC -114 Hand Joint Model

- Life size, , Made of PVC
- Demonstrate all the hand functionality and the external anatomical structure.
- Mounted on a plastic base



LC -114A Hand Joint Model with Ligaments

- Life size, , Made of PVC
- Demonstrate all the hand functionality and the external anatomical structure
- It is constructed with flexible plastic ligaments
- Mounted on a plastic base.



LC -1212P Life-Size Muscular Shoulder Joint Model



Shows a full size normal right shoulder with muscles attached. It includes: infraspinatus, subscapularis, supraspinatus, teres major and minor muscles; acromion, clavicle, humerus and scapula bones; plus eight ligaments and tendons. Red is muscle and white is ligaments.

Size:17*12*22cm.Made of PVC.

LC-1225 Muscular Hip Joint Model



In the hip model, the following muscles are illustrated obdurator externus, glutinous medius, gemellus superior and inferior, and iliacus with a branch of the psoas major. Life size. Made of PVC.

LC -1226 Muscular Knee Joint Model



Life size. It is a realistic replica of knee joint muscles and ligaments. Made of PVC Plastic. Mounted on a stand.

LC -H015C Hand Arthritis Model



This model of full size hand with cutaway views to reveal the effects of rheumatoid arthritis on ligaments, flexor and extensor tendons, muscle, cartilage, bones, synovial membrane, and joint spaces. A cross-section of the metacarpophalangeal joint capsules.

LC - Foot with Muscles Model



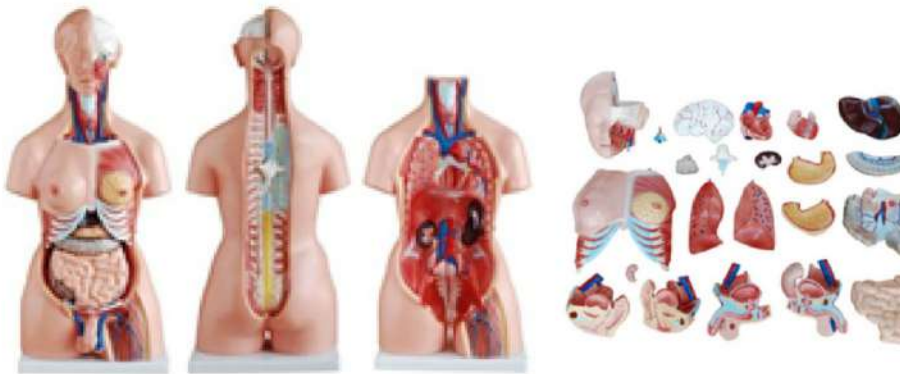
Life sized muscular foot model. This model features removable sections to provide a detailed, in depth view of the muscles and ligaments. Model includes a base and mount. Model can be removed for physical study.

LC -326 Foot Anatomy Model 3 Parts (Normal, Flat and Arched Foot)



This model shows the anatomical structure and the distal end of tibia of normal, flat and arched foot. Set of 3 PCS, life sized. It is convenient, practical, flexible for doctor to use, For students and teachers to understand human anatomy.

LC-204 Unisex Torso 23 Parts 85 CM



- Size: 85 cms, Made of PVC.
- Features an exposed spine with removable vertebra and spinal cord segments. Mounted on a plastic base
- Interchangeable male and female genitalia. The female organs include a fetus in the womb
- Dissectible into 23 parts: torso, female breast plate, head, eyeball, brain, vertebra spinal nerves, lung (2 parts), heart (2 parts), liver, kidney, stomach (2 parts), intestines (4 parts), male genitalia (2 parts), female genitalia with fetus (3 parts).

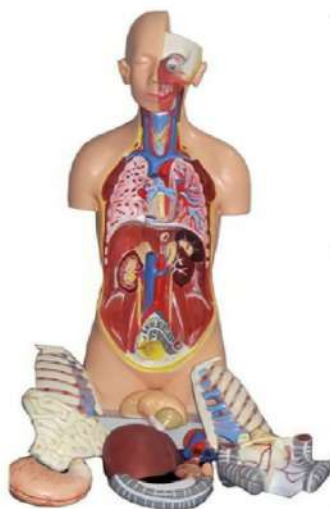
LC-204A Unisex Torso 40 Parts 85 CM

- This is a unisex human torso having 40 parts: torso, female breast plate, head, eyeball, brain (8 parts), vertebra spinal nerves (4 parts), lung (4 parts), heart (2 parts), trachea, esophagus and descending aorta, diaphragm, liver, kidney, stomach (2 parts), intestines (4 parts), male genitalia (4 parts), female genitalia with fetus (3 parts).
- Made of high quality PVC, mounted on base.



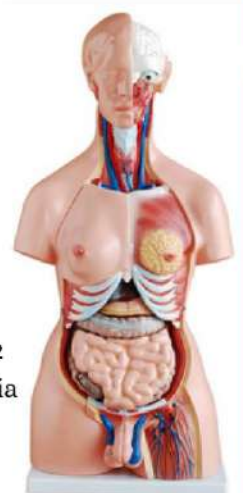
LC-205 Mini Torso 50 cms

- This torso features brain (2 parts), cut calvarium, heart, lung (4 parts), stomach, diaphragm, liver, trachea and esophagus and aorta, pancreas and spleen, intestine etc. dissectible into 15 parts
- Made of high quality PVC, mounted on base.



LC-205A Mini Unisex Torso 50 cms

- Features an exposed spine with removable vertebra and spinal cord segments, a female breast plate and interchangeable male and female genitalia. The female organs include a fetus in the womb.
- Dissected into 23 parts: torso, female breast plate, head, eyeball, brain, vertebra spinal nerves, lung (2 parts), heart (2 parts), liver, kidney, stomach (2 parts), intestines (4 parts), male genitalia (2 parts), female genitalia with fetus (3 parts).
- Made of PVC plastic. Mounted on a plastic base.



LC - A11301/1 Male Muscular Figure 78 CMS



- This model consists of 27 parts, such as muscles of chest wall and abdomen, muscles of upper and lower limbs, skull, brain and viscus.
- It shows the structure of head, neck, torso, upper and lower limbs, muscles, muscular tendon, ligaments, viscus, blood vessels, brain etc.
- Material: Advance PVC

LC-A11308 Muscles of Leg with Main Vessels And Nerves



- The standing model shows the most important blood vessels and nerves in the left leg, greatest gluteal muscle, tensor muscle of the broad fascia, sartorius muscle, straight muscle of the femur, semi-membranous muscle, semitendinous muscle, biceps muscle of the femur, digitorum longus muscle, triceps muscle of the calf.
- Separated into 10 parts and 82 positions are displayed.

LC -A11305 Muscles of Arm with Main Vessels and Nerves



- The model shows the network of blood vessels and nerves in the right arm, short and long extensor muscle of the radial wrist with brachioradial muscle, round pronator muscle, superficial flexor muscle of the fingers.
- Separated into 6 parts and 87 positions displayed.

LC-L107 Mini Whole Body Muscled Man



- This model is 18cm tall for students to learn the human muscled body. Also for promotional gift for doctors or guests.
- Size:18cm tall, Weight:0.3kgs

LC-18212 Head and Neck with Blood Vessels, Nerves and Brain

- Separated into 19 parts such as: Mimic muscular system with the deep-set muscles, Left temporomaxillary articulation, Sternocleidomastoid muscle, Carotid trigone, Trapezium Muscle, Pectoral major muscle, Deltoid Muscle, Clavicle, Eyes with muscle and nerves, Cranium, Brain with arteries.
- 190 positions are displayed.



LC-18211 Head And Neck Muscles and Vascular Brain Model

Separated into 10 parts.
Cranium, eye, cerebral falx, right half of the brain, left half of the brain, cervical vein.



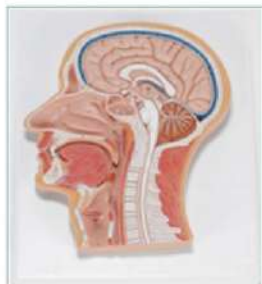
LC -1413PN Half Head Model With Nerves and Vessels

This high quality model represents the outer, superficial and the internal (median section) structures of head and neck. The half head with musculature is delivered on removable stand.



LC -1414P Human Head Model Sagittal Section

- This elaborate model shows the structure of the brain, spinal cord, nasal cavity and larynx.
- 33x23x5 cm
- Made of PVC



LC -H022 Head with Pharynx Muscles

This model opens medially along the sagittal plane to reveal details of the oronasal cavity and larynx. The musculature of the pharynx is extremely well depicted.



LC-324 Model of the Head

This model shows the interior parts of the mouth cavity and pharynx with network of vessels and trigeminal nerves.



LC -A18001 Neuron Model

Consists of 2 parts. Shows neuron body and nerve fiber, neuronal axon hillock, dendritic arbor, neurofilament etc. Made of PVC. Shows 15 positions.



LC-307A Life Size Heart Model 2 Parts



- This heart model shows the anatomy of human heart with ventricles, atriums, valves, veins, and the aorta in great anatomical detail. The front heart wall is removable to view the chambers and internal structure.
- Dissectible into 2 parts.
- Made of PVC Plastic.

LC -307 Jumbo Heart Model



- Size: 25 × 23 × 23 cm.
- Made of PVC plastic.
- Clear conception of routes of the systemic and pulmonary circulation.
- Dissectible into 3 parts. 4 times enlarged.

LC -MK019 Pumping Heart Model



- A 3-D working plastic heart model with clear chambers. Squeeze bulb pumps simulated blood through clear heart chambers just like real one
- Complete heart model with display stand.

LC-320 Larynx, Heart and Lungs Model



- Life-size model, separates into 7 parts.
- The lungs have two removable lobes to show the internal structures, the heart bisects showing atria, ventricles and valves, the larynx bisects and the diaphragm is shown. On stand.

LC-306 Stomach Model



- Made of hard plastic, Magnified 2 times the natural size
- Shows the morphology of the stomach in the distended state.
- with the longitudinal section, the model shows the structures of the gastric folds, pyloric valve, pyloric sphincter muscles, gastric mucosa and the transitional mucosa of the gastric-esophagus.

LC -301 Magnified Human Larynx Model



- A functional model, On base 3 times enlarged.
- Shows movements of epiglottis & cartilages in the voice box.
- Shows the morphology and structure of the respiratory tract and phonetic organ. Magnified Human Larynx PVC Model.
- Size 11.5 X 11 X 24 cm, 3-parts Dissectible

LC -302 Magnified Pulmonary Alveoli Model

- Shows the small branches of principal bronchus: Section of bronchiole of no cartilage. The relation between pulmonary alveoli and terminal bronchiole. The structure of alveolar sac and alveolar duct. The capillary rete in the alveolar septa.
- Size: 26 × 15 × 35 cm

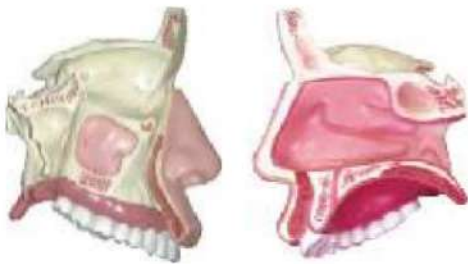


LC -303C Giant Ear Model

- Demonstrates the three main structural parts of the ear organ (outer ear, middle ear and inner ear).
- Dissectible in 6 parts.
- Made of PVC Plastic. Size 33 x 15 x 23 cm.



LC -309 Model Of Anatomical Nasal Cavity



- External nose : shows the section of the nasal bones and cartilages.
- Nasal cavity : on the lateral nasal wall show the superior, middle and inferior nasal conchae project medially into the nasal cavity forming the superior, middle and inferior nasal maxillary sinuses.
- Paranasal sinuses : shows the frontal, sphenoid and maxillary sinuses.

LC -316B Eye with Orbit Model

- Shows the optic nerve in its natural position in the bony orbit of the eye (floor and medial wall). At three times life size this eye model is great for anatomical demonstrations.
- Dissectible into 10 parts, 3 times enlarged.



LC -316 Giant Eye Model



- Size: 15.5cm. Made of PVC. 6 times enlarged model.
- The different parts are detachable.
- Tunica externa: showing cornea and sclera with attachments of ocular muscles and optic nerve.
- Tunica media: showing the iris, the ciliary body and the choroid. Tunica interna is retina.
- Refraction media: showing the lens and the vitreous body.

LC - S037 Cataract Eye Model



Includes interchangeable lenses that show various types of cataract conditions including: sub capsular, capsular, mature, cortical and nuclear.

LC-308 Brain With Arteries (8 Part)



This 8 part brain model with arteries facilitates a correct understanding of the features of the brain and its arterial supply as a whole relation between their component

External features of the brain: cerebral hemisphere, brain stem, cerebellum. The arterial supply of the brain: sources, vertebral, internal carotid arteries, arterial supply of the cerebellum and cerebrum.

LC-318 Brain With Arteries on Head



This model shows the brain structure inside the skull. Two halves brain can be disassembled into: Frontal with parietal lobes, temporal with occipital lobes, half of brain stem, half of cerebellum. Life size, dissectible into 9 parts.

LC- Coloured Brain Model (Half)



1:1 Half Section of Human Brain Brainstem Model with Colored Brain Functional Area for School Study Display Comes with display base. Deepen the understanding of the structure of the human brain. Great for school teaching tool, learning display, and collectibles, also will be a great addition to your lab supplies
Material: PVC Material

LC- 8 Part Coloured Brain Model



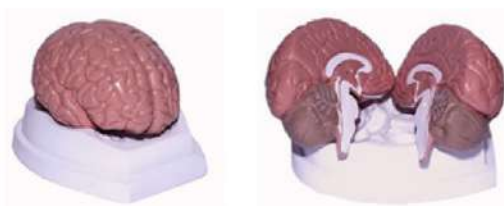
A life-size model. The left side is colored to show the sensory and motor areas. The 12 cranial nerves roots are shown and numbered, together with some of the important arteries. Dissects into 8 parts. Supplied on a base.

LC- Delux Brain Model 9 Parts



Life size model of a human brain, can be divided in the medial plane along the longitudinal fissure. It consists of 9 parts: frontal and parietal lobes, temporal and occipital lobes, the brain stem, the cerebellum and the basilar artery. It shows also the arterial blood supply and the important anatomical structures in great detail. On base tray.

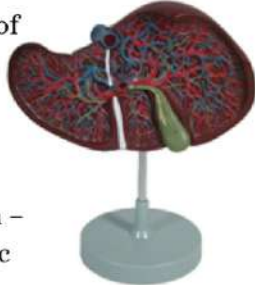
LC- 2 Part Brain Model



Accurately cast of an unbreakable vinyl plastic, this life-size model is an essential, three-dimensional tool for studying the human brain. Model can be divided into right and left halves-revealing key internal structures. Major anatomical features are numbered and highlighted in contrasting colors. All numbered features can be referenced on the included key. Measures 19cm x 17cm x 18cm; includes display base.

LC-312 Liver Model

An economical way to study the basic structure of the liver. The complex vessels network in the opened liver, displayed in different colors of the model: hilus vessels, extra – hepatic and intra – hepatic bile ducts.



LC -311-1 Model Of Spleen, Pancreas And Duodenum

This natural size model reproduces the pancreas, the spleen and the duodenum. The pancreas is open to show the entire pancreatic duct. The duodenum is partially dissected to expose its nice structure.



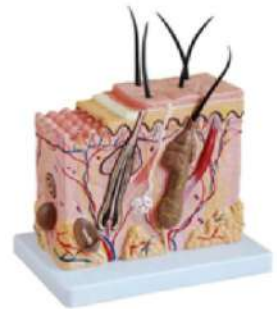
LC-311 Model Of Liver, Pancreas And Duodenum

This model is made to study the structure of liver, spleen, blood vessels and pancreas. External structure is illustrated as well as the pancreatic duct of the pancreas. Also shows the abdominal aorta and inferior vena cava. Life size – dissectible into 3 parts.



LC-313 Enlarged Skin Model

This model shows a section of human skin in three dimensional forms. Hair, sebaceous and sweat glands. Receptors nerves and vessels are shown in detail. 70 times enlarged.



LC -317 Expansion Model Of Urinary Bladder

This model shows the male urinary bladder with the prostate gland surrounding the urethra. Dissected medially to expose both internal and external structures.



LC Skin Anatomical Model

Detailed view of the structure of human skin, made of high quality materials tough and durable, can be used in medical education, hospital clinics, etc. Can be used to explain more clearly. The shape is realistic, easy to watch and learn. Product size: 12 * 7 * 18.8 cm



LC-330 Model Of Transparent Lung Segment

This model of transparent lung segment presents 10 segments in the right lung and 8 in the left. The distribution of the bronchial tree can be observed through the transparent lungs. Right lung: right upper lobe (3 segments), right middle lobe (2 segments) and right inferior lobe (5 segments). Left lung: left upper lobe (4 segments) and left inferior lobe (4 segments). Distribution of the bronchial tree: right bronchus, left bronchus. Hilus of lung, the lung is made of transparent plastic. The trachea and bronchial tree is made of PVC plastic.



LC - 310-3 Human Kidney Model With Adrenal Gland



This life size model features the kidney, adrenal gland, renal and adrenal vessels and upper portion of ureter. Dissectible into 2 parts to reveal the cortex medulla, cortex vessels and renal pelvis. Model can be removed from the stand for instruction and patient education. Size 12.5 x 12.5 x 20 CM

LC-U022B Large Kidney Model



This life size model of human kidney features the kidney, adrenal gland, renal and adrenal vessels and upper portion of ureter. Dissectible into 2 parts to reveal the cortex medulla, cortex vessels and renal pelvis. Model can be removed from the stand for instruction and patient education. Size 12.5 x 12.5 x 20 CM

LC- U026 Kidney Section With Renal Nephron And Renal Capsule



This colorful and anatomically accurate model depicts a longitudinal section of the right kidney All important structures for student and patient education are shown The kidney is three times of the life size.

LC-331 Male Urogenital System



This model of male urogenital system is intended for schools as visual aid in teaching physiology and hygiene to help the students to understand the external features of the urogenital system of the kidney, urinary bladder, penis and testicle. Made with high quality PVC plastic, size 20 x 20 x 50 cm .

LC-332 Female Urogenital System



The model shows the kidney, ureters, urinary bladder, uterus, accessories of uterus, vagina, ovary membrane, ligaments, uterus ligaments and its artery ETC. Made with high quality PVC plastic, size 20 x20 x 50 CM.

LC -A12006 Appendix And Caecum Model



Made of advanced PVC mounted on stand, natural size shows wall of the caecum and appendix separated into two parts. shows 17 positions.

LC-436A Magnified Uterus Model



With the coronal section this model shows: Uterus. The cervix is divided into a supra-vaginal portion and a vaginal portion. The ligaments of the uterus are eight in number.

LC -A15105 Female Genital Organs Model

This female genital model is dissected and mounted on a stand. Shows internal and external female genital organs. Model consists of 4 parts. Shows 40 positions, made with advanced PVC plastic.



LC - 417 Contraception Guidance Model

This model shows the anatomical section of female genitals. It can be demonstrated how to put the pessary, how to put contraceptive medicine membrane or tablet, how to put in and take out the IUD and how to make induced abortion etc..



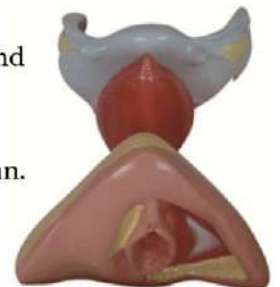
LC-A15102 Male Genital Organs Models

This male genital model is dissected in median and mounted on a stand. Shows the penis, prostate, bladder, seminal vesicle, spermatic cord and inguinal canal and base. Shows 72 positions, made with advanced high quality PVC plastic.



LC-429 Female Internal And External Organs Model

It shows the entire female genital organs including uterus, uterus appendix (fallopian tube, ovary and its ligament teres uteri, ligament ovary proprium), vagina and the structure of external genital organ. Part of uterus and vagina are dissected to show its internal structures. Size: life-size. Made with high quality PVC plastic.



LC - A42010/1 Human Placenta Model

This human placenta model is mounted on stand. Shows the structure of placenta and relation between placenta and umbilical cord. Made of advanced PVC plastic, 7 positions are displayed.



LC-F5M Male Condom Training Model



This model shows erect penis with testicles and is used to quickly learn how to use a condom safely. The anatomical structure and its firmness are absolutely realistic, so that your students can train putting on and removing a condom in a realistic way.

LC-F9B Female Contraception Practice Simulator



This model simulates ante version uterus, fallopian tubes, labium, vagina and transparent abdominal wall cover in the pelvic cavity. expansion of vagina, the use of vaginal speculum, operation of female condom, contraceptive sponge and cervical cap.

LC-F5N IUD Training Model



This IUD training model is based on real anatomy of female genitalia; we designed this model for instructing or training of insertion or removal IUD. The uterus is in coronal section and covered with transparency plastic window. So students can directly observe the entire insertion or removal process.

LC-F3ND Plastic IUD Training Model



The IUD Practice Model is designed to function as a practice piece for the doctor or clinician. This piece enables doctors and clinicians the ability to practice insertion of the IUD prior to actual patient insertion. This model is designed to give doctors and clinicians the feel of an actual uterus.

LC-1303 Human Excretory System Model



Size 40 x 80 cm, made of HSP resin. Delivered on a wooden baseboard for easy display. It shows the structures of the retroperitoneal cavity which includes: descending aorta, inferior vena cava, renal veins and arteries, ureter, urinary bladder cut open to show trigone and other vessels and prostate gland. Left kidney and left adrenal gland in section. Model also shows testis and penis in section. The model has anatomical details that make it great teaching aid. 36 key features marked.

LC-333 Urinary System Model



The model shows the structures of retroperitoneal cavity, pelvis with bones and muscles, inferior vena cava, aorta with its branches, upper urinary tract, kidney with adrenal gland, ureter, bladder ETC.

Dissectible into 4 parts.

LC -1301A Digestive System Model

This life size model of human digestive system model is made of HSP resin. Relief model of a human digestive system in median section dissectible into 3 parts. Duodenum, caecum and rectum are opened. Rectum is unfolded. Transverse colon and front half of the stomach is removable. The model features the oral cavity, pharynx, esophagus, stomach, liver with gall bladder, pancreas, IG tract and spleen. Mounted on a sturdy wooden base.



LC-18102 Spinal Cord in Spinal Canal Model

The model shows the brainstem and the spinal cord as well as the nerve branches up to the coccygeal plexus. On the left side the sympathetic trunk with its connections to the central nervous system are shown. Spinal Cord in the Spinal Canal Model in one piece, mounted on a green base plate. As seen from the ventral side, this model shows the brainstem and the spinal cord as well as the nerve branches up to the coccygeal plexus.



LC-315 Digestive System Model

Digestive system model Life size digestive system model, demonstrates the entire digestive system in graphic relief. Digestive system feature : nose, mouth, cavity and pharynx, esophagus, GI tract, liver with gall bladder, pancreas and spleen. The duodenum, caecum and rectum of the digestive system are opened. Dissectible into 3 parts. Mounted on baseboard. 51 key features marked.



LC-1302 Circulatory System Model

Made of high grade synthetic polymer having long durability. Mounted on sturdy wooden frame for easy display. Size : 40x80 cm, Beautifully painted in bright colors.



LC -A16001 Circulatory System Model

Introduces main arteries and veins of the body. 81 positions are displayed. Material: Advanced PVC



LC-1307 Nervous System Model



This nervous system model shows a schematic representation of the central and peripheral nervous system. This is an excellent model to study the structure. Mounted on a base. Size 810 x 300 x 50mm

LC-A18101 Nervous System Model



This model of nervous system is made of advanced PVC and paint. The model shows the structure of central nerves, peripheral nerves, including spinal nerves radiated from central system to other parts of body. 33 positions are displayed.

LC-A16011 Lymphatic System Model



This lymphatic system model shows the component and structure of the lymphatic system and it displays around 63 positions. This model is made of advanced high quality PVC plastic.

LC - A180H Sympathetic System Model



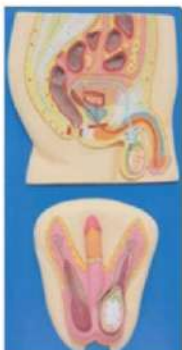
This model shows the outlook of automatic nervous system, including sympathetic nervous system and parasympathetic nervous system. The sympathetic one shows in yellow color and parasympathetic one in red.

LC-1306 Respiratory System Model



A relief model of the respiratory system, including the or nasal cavity, larynx and trachea, primary bronchi and bronchial tree. The upper respiratory tract is sectioned along the medial sagittal plane. An alveolus with blood vessels. Size: 55 x 39 x 5cm

LC-1304 Male Reproductive System Model



Mounted on sturdy wooden frame for easy display. Size : 40x80 cms. Well illustrated and informative. Beautifully painted in bright colors. Model is accurately made from actual specimen references, photographs and encyclopedia reference under expert guidance. Model is a great teaching tool for anatomy lessons.

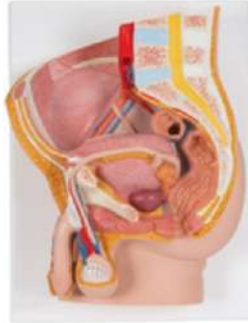
LC-1305 Female Reproductive System Model



Mounted on sturdy wooden frame for easy display. Size: 40x80 cm. Well illustrated and informative. Beautifully painted in bright colors. Model is accurately made from actual specimen references, photographs and encyclopedia reference under expert guidance. Model is a great teaching tool for anatomy lessons.

LC-331A Human Male Pelvis Section Model

This male pelvis anatomy model is shown in median section. One half of male genital organs with bladder is shown at the normal position in the male pelvis. The rectum is removable for a more detailed study of the male pelvic anatomy. This high quality anatomy model is delivered on baseboard.



LC-332A Human Female Pelvis Section Model

This female pelvis is in median section. This female anatomy model shows one half of the female genital organs with bladder and removable rectum. The female pelvis is delivered on baseboard, offering the possibility to be mounted to the wall.



LC - Female Pelvis Cavity Model

This life size model, composed of 3 parts, shows an open dissection through the median sagittal section of the pelvis.

Internal structures of the female urogenital system are portrayed in great detail. Removable parts include half of the female reproductive system with the uterus opened to reveal medial and transverse sectional views.



LC- P039A Male Pelvis Cavity Model

This life-size Male Pelvic Cavity Model provides detailed views of external and internal structures. The removable parts show the male reproductive, muscular, and urinary system.



LC -332B Human Pregnant Female Pelvis Section Model

This median section of human pregnant female pelvis model shows normal position of child before birth. Removable fetus. Made with high quality PVC plastic. Size 38 x 25 x 40cm.



LC-1308E Fetal Circulation Model

A one-piece, semi-schematic model of the fetal heart, lungs, liver, placenta and umbilical cord. The aorta and hollow vein have different colors and markings to represent the circulation and flow direction of the blood. Mounted on base



LC-1425PN Female Breast Deluxe Model

This life size model of human female breast is made of high quality PVC plastic. This model opens in half to display all internal structure of female breast. It's able to stay close by a metal hook. Mounted on base, 12 key features marked.



LC-1426PN Deluxe Female Breast Model During Lactation

This life size human female breast model is made of high quality PVC plastic. This model opens in half to display all internal structures of female breast during lactation. It is able to stay closed by a metal hook. Mounted on base, 12 features marked.



LC - Transparent Dental Implantation Tooth Model



Great model for dentists to communicate with patients. Useful equipment for students learning and ideal for treatment planning discussions with patients. The teeth model is made of good quality resin material, which is decent also super quality non-toxic eco-friendly material. This is very useful demonstration model for implanting missing teeth with bridge

LC-Adult Gum Teeth Model



This human teeth model is great tool for students to learn or demonstrate children's teeth brushing.

LC-Dental Care Model



Shows anatomical structure of teeth and nerves on the lower jaw.

LC -C017 Artery Model



With the help of this artery model doctors can explain changes in the blood vessels due to arteriosclerosis. A horizontally dissected artery fork is depicted with arteriosclerotic changes in four different stages, from slightly sediment to a completely clogged blood vessel. Arteriosclerosis model on stand.

LC -C017A Artery Model With Cross Section

This model of artery with 4 cross sections shows one normal artery with 4 cross sections to show the development of artery disease. Size:17*13*16cm, Weight:0.4kgs



LC -C017C 4 Part Artery Model

The model shows 4 stage cross section of narrowing of an artery due to buildup of cholesterol and plaque. Four stages depict normal artery, fatty streak, fibrous plaque and blockage in order. All stages rotate on a hinge pin. 8 features marked.



LC-D013 Diseased Digestive System Model

2 parts, stomach can be removed. It shows stomach cancer, gastric ulcer, intestinal cancer etc diseases



LC -D015B Diseased Rectum Model



It shows the hemorrhoids of rectum structure and with comparison of the normal one. Size:12*12*16cm, Weight:0.2kgs

LC- D015C Hemorrhoids Model



This anatomy model is a life-size frontal section of the rectum as well as a smaller relief on a pedestal. In addition to the anatomical structures of the rectum (sphincter, mucous membrane, venous plexus), the model shows internal hemorrhoids during stage I and II as well as external hemorrhoids. The relief exhibit shows hemorrhoids during stage third and fourth.

LC-D016 Diseased Esophagus Model



This vivid esophagus model is a life-size frontal section that reaches from the lower part of the esophagus to the upper part of the stomach. The following illnesses are replicated in the diseases of the esophagus model: Reflux esophagitis, Ulcer, Barrett's Ulcer, Esophageal carcinoma, Esophageal varices and Hiatal hernia .

LC- Diabetic Foot Model



The Diabetic Foot Model represents a foot with three ulcers in various stages of development as well as other features commonly associated with diabetes.

LC-D035A Diseased Liver Model (Small)



Highly detailed model. Shows lobule, ligaments, cyst, biliary system of liver. Made with high quality PVC.

LC-D021D Diseased Stomach Model



This model describes the most common pathological patterns of human stomach, such as gastric ulcer, gastric cancer, chronic atrophic gastritis, gastric bleeding and so on. Life size human stomach model, with highly detailed shown, great for medical/class study tool.

LC- D034A Diseased Pancreas, Spleen and Gall Bladder Model



This full size model of diseased pancreas, spleen and gall bladder shows pancreatic cancer, the gallbladder with stones, a ruptured spleen and duodenum with an ulcer.

LC-D035 Diseased Liver Model



Liver pathologies shown by the model include: biliary obstruction, cirrhosis (septal and nodular), tumors (liver cancer) and gallstones. This liver model comes complete with base. Full size liver model with the following common pathologies: Cirrhosis (septal and nodular), biliary obstruction, gallstones and tumors.

LC-H015C Hand Arthritis Model

This model of full size hand with cutaway views to reveal the effects of rheumatoid arthritis on ligaments, flexor and extensor tendons, muscle, cartilage, bones, synovial membrane, and joint spaces. A cross-section of the metacarpophalangeal joint capsules.



LC-134 Vertebral Osteoporosis Model

Consists of 3 medially divided lumbar vertebrae with intervertebral discs. For anatomical comparison, the upper section shows healthy bone structure, the middle section osteoporotic bone structure and the lower section advanced osteoporotic bone structure with flattened plates, deformation and decreased bone mass.



LC-1504 Disc Prolapse Simulator

This vertebral disc simulator demonstrates the principles of an intervertebral slipped disc in an interactive way; if the two vertebrae are pressed, the prolapse can be seen.



LC-1505 Lumbar Vertebrae Degeneration Model

Reflects the difference between a bulging disc, the variances of herniated discs, including protruded and extruded discs and is completed with degenerated or desiccated discs.



LC-119 Lumbar Sacrum with Herniated Disc

The model features anatomy of lumbar spine, sacrum, and coccyx and also shows herniated lumbar disc. The model is best suited for medical student learning and teaching and class presentations.



LC- 3 Stage Arthritis Knee Model with Implant

This impressive model shows three scaled down knee models. In addition to the healthy knee, this model shows a diseased knee as well as a knee with knee implant. All models are movable, upper and lower leg can be separated.



LC-D053A Diseased Tooth Model



This diseased tooth model represents a molar tooth with multiple pathologies. Both internal and external structures are available for observation as part of the model has a cut-away section. The tooth model is one piece and the pathological structures include tartar, cervical caries, caries, apical periodontitis, pulpitis and gingivitis. Size: 6*4.5*10.5cm,

LC- N051 Brain Stroke Model



This life size model depicts 3 different pathologies that involve the vascular system of the brain, including arteriovenous malformations (called AVM), in which the blood vessels are tangled together rather than forming a normal circuit. Other featured conditions include a cerebral aneurysm and a cerebrovascular hemorrhage (stroke). On base with stand. Size:18.5*15*15cm, Weight:0.5kgs

LC-R012 Asthma Model



It shows asthma disease. Made of high-quality unbreakable PVC Plastic. Anatomically accurate. Size:12*12*20cm, Weight:0.7kgs

LC- 4 Stages Osteoarthritis Shoulder Model



Set of four shoulder models, reduced size, illustrating degenerative joint disease of glen humeral joint: erosion to joint articular cartilage, progression of degenerative disease, osteophyte (bone spur) formation at the articular surfaces, and humeral head flattening. Normal stage includes a full scapula. Advanced stage shows acromioclavicular joint osteoarthritis and ligaments.

LC - 4 Stages Osteoarthritis Hip Model



Set of 4 hip models (1/2 scale) illustrating: degenerative joint disease (osteoarthritis); erosion to joint articular cartilage; Progression of degenerative joint disease; osteophytes (bone spurs) at the articular surfaces.

LC -L045B 4 Stages Knee Arthritis Model



The arthritis model offered by us is designed using premium quality material and advanced techniques in strictly adhering to set guidelines. The model shows the different stages of knee arthritis.

LC-R034 Thyroid Disease Model

This set comes with one normal and 3 diseased thyroid.

Size: 20*17*16cm,
Weight: 0.9kgs



LC-R034A Thyroid Disease Model

This model shows thyroid's structure, thyroma and thyroid cancer.

Size: 17*13*16cm,
Weight: 0.6kgs



LC -145 Lung Disease Model



Full -sized 2-sided model of two separate lungs with 4 cutaway sections illustrating normal anatomy and the effects of COPD (Chronic Obstructive Pulmonary Disease), Cancer and asthma.

Size: 19*13*17cm, Weight: 1.1kgs

LC-R052 4PC Bronchus Model



This model shows the bronchus, split into a four stage cross-section, which illustrates the tissue changes that occur in asthma and chronic bronchitis. Four Stages: Normal bronchus, Hypersecretion of the mucous gland, Swelling with lymphoid aggregations and Smooth muscle spasm Model Features: Cartilage, Mucous glands and plug, Spiraling smooth muscles, Fibroelastic connective tissue and Epithelial layers of the bronchus Size: 13*10*4cms

LC -S037 Human Cataract Eye Model

This oversized human cataract eye anatomy model of a normal human eye includes interchangeable lenses that show the following types of cataract conditions: subcapsular, capsular, mature, cortical and nuclear.

Size: 20*13*16cm,



LC- U023 Kidney Cyst Model

This two-sided kidney model has a normal anatomy cutaway on one side and a diseased anatomy cutaway on the other side depicting: infection, scarring, atrophy, urinary (kidney) stones, tumor, polycystic disease, hypertension effects.

Size: 12*12*16.5cm,
Weight: 0.8kgs



LC-U071A Prostate Examination Model



This model of prostate examination comes with 1 normal prostate model and 5 diseased prostate model. Made of silicon.

LC-U043B Diseased Uterus Model



This model shows diseases of uterus model.
Size:20*17*10cm, Weight:0.89kgs

LC-U017 Normal And Diseased Prostate Gland



The model consists of three prostate sections, including the rectum and urinary bladder. The first model shows the internal and external structures of a normal prostate. The second one illustrates benign prostatic hyperplasia, characterized by variable fibromuscular and epithelial predominance. The third model illustrates prostatic adenocarcinoma.

LC-U034 Diseased Bladder And Prostate Model



This life-size model is sectioned along the frontal plane and shows, five different pathologies of the male urinary bladder in the typical location: cystitis, bladder stones, benign prostatic hypertrophy (BPH), diverticulum, as well as bladder tumor at three different stages. Mounted on stand. Size: 12*12*17cm, Weight:0.3kgs

LC -U076C Diseased Breast Model



This model shows Infiltrating scirrhous carcinoma, fibroadenoma, cysts, and an adenocarcinoma. Model also includes structures such as suspensory ligaments, fat tissue, lymph nodes, muscles and ribs. Size:16*11*7cm.

LC - Colon Pathological Model



Cut-away view model of the colon with the following common pathologies: Adhesions, Appendicitis, Bacterial infection, Cancer, Crohn's disease, Diverticulitis, Diverticulosis, Polyps, Spastic colon, Ulcerative colitis.

LAERDAL- Mama-U Postpartum Uterus Trainer

The model has all relevant anatomical features like fundus, cervix and perineum along with possibility to extend the uterus (relevant for insertion of postpartum IUD). The uterine angle can be changed by applying pressure to the model. It is possible to practice “blinded” placements and lift cover of the uterus to evaluate placement. Together with Sister-U, Mama-U was designed to complement family planning trainings and act as counselling aids for healthcare workers.



LAERDAL- MamaNatalie Birthing Simulator

MamaNatalie is particularly realistic for training control of postpartum hemorrhage - the number one cause of maternal death during childbirth - and communication with the mother. MamaNatalie's features include: Realistic bleeding, Positioning and delivery of the baby, Delivery of the placenta (complete and incomplete) Fetal heart sounds, Cervix landmark, Urine bladder catheterization, Uterine massage (atonic and contracted uterus), Bimanual compression.



LAERDAL - NeoNatalie

NeoNatalie is realistic in size and appearance with natural weight and feel when filled with lukewarm water. Including features such as spontaneous breathing, palpable umbilical pulse, and crying.

NeoNatalie can be used for role-play scenarios such as normal post-birth care, standard resuscitation, and resuscitation measures including positive pressure ventilation and closed chest compressions.



LAERDAL - MamaBreast

MamaBreast facilitates training in the following: Proper breastfeeding positioning and attachment and expressing breast milk.

MamaBreast Breastfeeding Simulator 30 ml cup are included in the MamaBreast kit.



LAERDAL - PreemieNatalie Preterm Simulator

Has realistic size and appearance for a preterm baby (1.6 kg, 32 week gestational age). Supports training in proper breast feeding positioning and attachment, correct nasogastric /oralgastric placement, and tube feeding. Can be used with Nifty Feeding Cup to practice breastmilk cup feeding. Can use with MamaBreast Breastfeeding Simulator to practice essential newborn care and Kangaroo Mother Care.



LAERDAL- Sister-U Multi-Uterus Trainer



The model has all relevant anatomical features like fundus, cervix and perineum along with possibility to extend the uterus (relevant for insertion of postpartum IUD). The uterine angle can be changed by applying pressure to the model. It is possible to practice “blinded” placements and lift cover of the uterus to evaluate placement. Together with Sister-U, Mama-U was designed to complement family planning trainings and act as counselling aids for healthcare workers.

LAERDAL- MamaBirthe



MamaBirthe is a birthing simulator and skills trainer that is ideal for demonstrating the mechanics of birth and train skills including abdominal and vaginal examinations, normal birth, vacuum assisted delivery, shoulder dystocia and breech.

MamaBirthe can be used as a tabletop model for demonstration and skills training and can be worn during in-situ team simulation and training respectful care. MamaBirthe gives birth to BabyBirthe, a highly realistic newborn simulator.

Features:

- Accommodates various birthing positions.
- Skills trainer with anatomically correct landmarks.
- MamaBirthe is both a tabletop skills trainer and a realistic wearable simulation trainer
- Highly durable - can facilitate 3,000 births without the use of lubricants.
- BabyBirthe: A realistic articulated newborn manikin with fontanels and anatomical landmarks. BabyBirthe's soft head allows for realistic attachment of vacuum for vaginal assisted delivery and creates a chignon effect.
- The bony structure of BabyBirthe makes it possible to identify the important landmarks in breech and shoulder presentations.
- Management of malpresentation including breech and shoulder dystocia.
- Realistic fetal head, birth canal, and pelvic floor facilitates natural rotation of the head as it descends.
- Comes with cervix inserts of 4, 6, and 8cm dilatation and effacement for skill training on vaginal examination.

LC-A42004 Embryo Model



This embryo model is mounted on stand. Made of advanced high quality PVC, 4 weeks old embryo model, shows 12 positions.

LC-127 Birth Demonstration Model



This model consists of a pelvis model with a fetal skull which is firmly connected to the model by means of a flexible metal tube which can be fixed in any position. It facilitates the study natural birth Size .

LC- 1201 Fetal Skull Model



Made of HSP resin having long durability. Natural size. Movable lower jaw, Total 41 parts labeled, Beautifully painted in colors and showing incomplete ossification of skull bones, fontanelles, frontal and parietal eminences, various skull bones like occipital, temporal, sphenoid, frontal, mandible and maxilla.

LC-A11115 Infant Skull Model



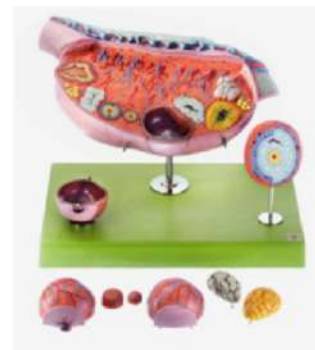
The anatomical lines where the bony plates of the skull join together can be easily felt in the newborn infant. The diamond shaped space on the top of the skull and the smaller space further to the back are often referred to as the "soft spot" in young infants. Made with advanced PVC material.

LC -1224 Fetus Skeleton Model



This life size model of fetus skeleton is made from high quality PVC. This full body fetus skeleton is anatomically accurate. Every part is made in a manner so that all joints can move freely.

LC-A41003 Ovary Model



This model of ovary consists of 8 parts and mounted on stand. Shows ovary, primary and secondary ovarian follicles, ovum, ovulation, ovum, corpus luteum and corpus albicans. It demonstrates the procedure of ovum's development. Shows 10 positions.

LC -332B Human Female Pregnant Pelvis Section with Fetus



This median section of human pregnant female pelvis model shows normal position of child before birth. Removable fetus.

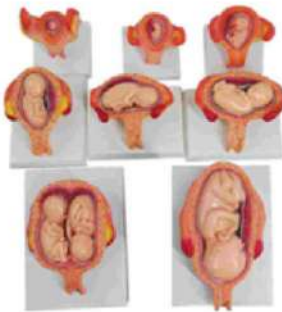
Made with high quality PVC plastic. Size 38 x 25 x 40cm.

LC - A42008 Fetus With Viscus and Placenta



This model shows a female fetus at the end of the pregnancy with a placenta and umbilical cord. Separated into 13 parts as follows: Placenta, umbilical cord, abdominal cover, lungs, heart, thymus, diaphragm, liver, stomach, intestine and body.

LC-414A Development Process of a Fetus (Half Size)



Shows the development of ovum to the fetus in 7 months. Set includes models of: 1st month embryo, 2nd month embryo, 3rd month embryo, 4th month fetus (breech position), 5th month fetus (transverse lie), 5th month fetus part 2nd (transverse lie), 5th month twin part 3rd (normal position), 7th month fetus.

LC -A42002 Human Fertilization and Early Embryogeny Model



This model of human fertilization and early embryogeny shows the development from ovum to the fetus in third month.

16 positions are displayed. Made from advanced high quality PVC.

LC-414 Development Process of a Fetus



This set includes separate models of: Normal uterus shows the inner genitals, Placenta is shown for 1st month dummy, Embryo is shown which looks like human, Fetus reaches length of 9 cm in 3rd month, Fetus reaches length of 16 cm in 4th month, Fetus reaches length of 25 cm in 5th month, Fetus reaches length of 30 cm in 6th month, Fetus reaches length of 35 cm in 7th month, Fetus reaches length of 40 cm in 8th month, Fetus reaches length of 45 cm and Fetus and uterus is shown in 9th month.

LC-A42007 Demonstration Model of Child Birth (3 Stages)

- The anatomical models demonstrate the delivery process.
- Consisting of uterus, fetus, placenta.
- The set of childbirth model displays 3 stages of labors.
- Each labor model have 3 major parts: pelvis, uterus, and fetus etc.
- 44 positions are numbered and showed in the manual.



LC-A42001 Fertilization Process Simulator



This fertilization process simulator is made from high quality HSP resin. Two frontal sections of female reproductive organs showing fertilization process. Mounted on a sturdy wooden base, 23 features marked.

LC-409A New Style New Born Baby



The size and configuration of this model is almost as same as the normal newborn baby. The head, upper limbs, lower limbs and all joints are flexible. It can demonstrate the characteristic of the newborn baby and all kinds of operations in clinic education: includes different parturition method, newborn baby bath etc.

LC-409 New Born Baby Model

The size and configuration of these two models are almost as same as the normal newborn baby. The head, upper limbs, lower limbs and all joints are flexible. It can demonstrate the characteristic of the newborn baby and all kinds of operations in clinic education: includes different parturition method, newborn baby bath etc. Made of soft PVC plastic, washable. Length: 52CM, head diameter: 34CM.



LC-409C Baby with Placenta and Umbilical Cord

Newborn systemic model, moveable head and limbs. Realistic umbilical cord with umbilical vein and artery. Umbilical cord ligation and nursing, realistic touch feeling, the enough length of umbilical cord can be used continually; Neonatal basic nursing: lactation, sponge washing, wearing clothes, changing diapers



LC -F8A Difficult Labour Model



The simulator can demonstrate all kinds of difficult deliveries.

LC -F6 Model For Course of Delivery (Leopold Maneuvers Simulator)



The model basing on the mechanism of normal labor, shows the cardinal movements of engagement: descent- flexion internal rotation of the head- extension-restitution- external rotation of the head- internal rotation of the shoulders.

LC -FW3 Leopold's Maneuvers Anal And Vaginal Examination Simulator



Soft and elastic texture and realistic feeling. Allows to aerate the abdomen to adjust upheaval, and have Leopold's maneuvers training and assessment. Allow to have vaginal and anal examination to ascertain the fetal position. Pelvic measurement.

LC-F8 Midwifery Training Simulator



The pelvic is life size with primary landmark and hand depicted outline. Smooth, soft skull with fontanelles for realistic vacuum delivery. All joint movements allow for different fetus positions to demonstrate a wide variety of normal and abnormal deliveries.

LC -F52 Advanced Delivery Mechanism Demonstration Simulator



An anatomically correct pelvic model with fetus and placenta to give students experience with multiple technique and procedure for emergency childbirth. Twinborn (one infant boy and one infant girl) presentation and delivery.

LC -F53 Advanced Manual Delivery Mechanism Demonstration Simulator



Demonstrate the fetus, umbilical cord and placenta of vacuum-assisted delivery, flexible fetal joint, and multiple normal and abnormal positions of fetal delivery can be showed; Equipped with manual delivery mechanical parts; with the help of hands, the whole delivery process, including engagement, descending, flexion, internal rotation, extension, restoration, external rotation and fetal delivery, can be showed; Can practice and master the comprehensive skills of normal labor, abnormal labor (dystocia), midwifery and perineum protection.

LC -F7A Breast Examination Model



Functional Characteristics: Palpation of galactophore malignant tumor, innocent tumor, lymphaden and lobulusaccrementition;
Material Characteristics: 1. Made of Advanced thermoplastic; 2. Life like shape, skinny, pleasant to touch, durable. Ametabolic under disinfections and cleanout, convenient delivery. Size: 46*16*35cm N.W.: 2 kg

LC -14A Breast Inspection Model



Obvious anatomical marks, realistic texture. Demonstrates lesions including: Lump: hard texture, rough surface, can be considered as therioma texture is relatively soft, flat surface, can be regarded as benign tumors Lymphatic metastasis: from armpit and neck, trainees can touch hard texture lymph nodes: Nipples changes: nipples are depressed, ulceration, bloody liquid overflow Skin changes: skin is depressed, orange-peel appearance, inflammatory breast cancer.

LC /F-0019D Electronic Inspection and Palpation of Breast Simulator

Contains the typical signs of various common breast tumors specifically targeting female breasts. Designed for bed diagnosis and self-examination. Made of imported plastic materials, soft texture and real touch. Breast zone provides different pathological features that can fully meet the needs of teaching. The model provides the following lesions:

Nodules: The texture is hard and the surface is not smooth and can be considered as a malignant tumor. The texture is relatively soft and the surface is smooth and can be considered as a benign tumor. **Lymphatic metastases:** Lymph nodes with hard texture can be touched in the armpits and neck. **Changes in nipples:** rupture of nipples and spillage of bloody fluids.

The electronic alarm device touches the corresponding part of the voice alarm



LC -F3A Perineum Cutting and Suturing Training Simulator



Designed for practice of perineum cutting and suturing. The main structure of the simulator is a perineum, which is made of simulative foam, and the inner muscle is soft PVC. The simulator is mounted on a plastic framework, easy disassembly. There are handles in the back and bottom of the simulator to adjust tension of the perineum.

LC - Human Breast Cancer Self-Exam Model



Full size model is made of durable lifelike material with embedded lumps that simulate fibrocystic mass and typical tumor. Model also contains a lactiferous duct. Back side of education card shows locations of irregular masses. Base art shows common self-inspection patterns.

LC -F3B Vulva Suturing Training Simulator



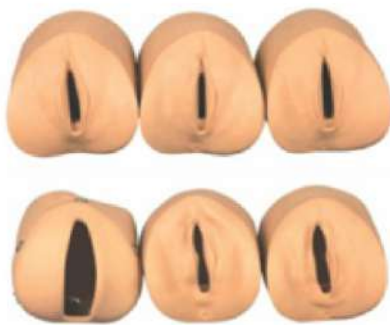
Right, left or median posterior incision can be selected to exercise perineum cutting and suturing.

LC - Cervical Dilation Model

A simple tool for teaching midwives about cervical dilatation. It has an inbuilt stand and comes with a cloth cover for protection. Made from molded plastic. 30cm x 20cm.



LC-20G Labour Delivery Model



This series model consists of six development phases and each part shows a state of prenatal cervix and birth canal. The whole model demonstrates the relations between the scope of the expanding of the orifice of the cervix, and the range of cervical tunnels, as well as the relation between the position of the head of the fetus and the square of ischial spine. The orifice of the cervix has no expanded, and the cervical tunnels haven't disappeared at all. The positional relation between the head of the fetus and the square of the ischial spine is -5. The orifice of the cervix has expanded 2 cm bigger, and cervical tunnels disappear 50%. The positional relation between the head of the fetus and the square of the ischial spine is -4. The orifice of the cervix has expanded 4cm bigger, and the cervical tunnels disappear absolutely. The positional relation between the head of the fetus and the square of the ischial spine is -3. The orifice and cervix have expanded 5cm bigger, and the cervical tunnels disappear absolutely. The positional relation between the head of the fetus and the square of the ischial spine is 0.

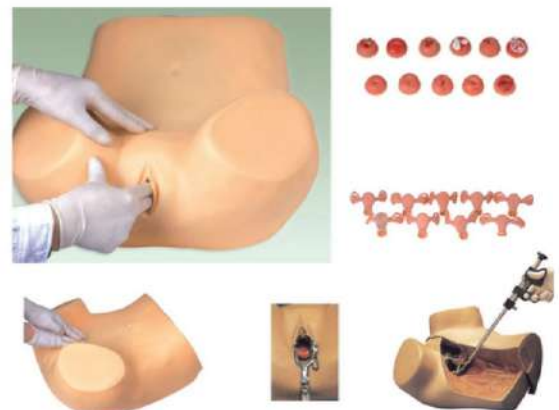
LC /6 Gynaecological Training Model



1. Palpation of normal and pregnant uterus
2. Bi-manual pelvic and tri-manual pelvic examination
3. Vaginal examination
4. Contraceptive instrument insertion and removal
5. Observation of uterus, ovary, fallopian tubes, and ligament.

LC-F30S Basic Gynecological Examination Simulator

- Palpation of normal and pregnant uterus
- Bi-manual pelvic and tri-manual pelvic examination
- Vaginal examination
- Visual recognition of normal and abnormal cervixes
- Contraceptive instrument insertion and removal.
- Observation of uterus, ovary, fallopian tubes, and ligament teres
- Normal and abnormal uterus and attachment model
- Place and remove IUD by using the guide fork of contraceptive ring
- Gravid uterus(Five-mouth fetus)
- Extra-uterine pregnancy(ampullary pregnancy)
- Salpingemphraxis



LC-F35 Advanced Gynecological Training Simulator



Features: It is including all the functions of F30S. Hysteroscopy checking, Laparoscopic visualization checking, can observe the Uterus, accessories, round ligament, uterine and other structures. It can place the female condoms, contraceptive sponge, cervical cap and other contraceptives. Cervix, Uterus can be replaced

Components:

The normal and abnormal uterus and accessories model can be bimanual and triple diagnosis checking

Normal uterus and accessories (the front uterus wall is transparent, so the IUD can be placed and taken out.)

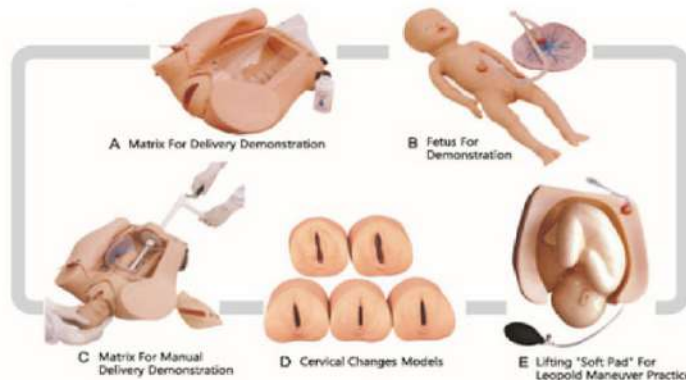
- Normal uterus and accessories, Uterus associated with significant flexion, forward.
- Uterus associated with significant back flexion, back forward.
- Uterus associated with right ovarian cysts tuba.
- Uterus associated with right tubal cyst.
- Uterus associated with right hydrosalpinx
- Uterine fibroids, Uterine inflammation associated with the right accessories
- Uterine malformations.
- Normal and abnormal cervix model (It is used for checking the parts by gyne catoptron) Normal cervix, Chronic cervicitis, Acute cervicitis
- Cervical cyst, Inflammation Sehner, Cervical polyps, Cervical adenoma
- Normal uterus, Endometrial polyps, Endometrial hyperplasia
- Uterine fibroids
- Early uterine body cancer
- Advanced uterine body cancer, End uterine cancer
- Pregnant uterus model, 6-8 week of pregnancy the uterus, 10-12 week of pregnancy the uterus, 20 weeks week of pregnancy the uterus
- Simulation of postpartum 48-hour uterus.
- The process of placing and taking out the IUD.

LC-FW2 Maternity Examination Simulator



- Palpation, embryo heart sound auscultation, pelvis measurement
- and mammary nursing training.
- Inflating uterus through ball to make model lifelike.
- Adjustable heart sound speed, volume.
- Heart sound can be heard not only from stethoscope but also from microphone in front board of the model.

LC-F54 Advanced Abdominal Palpation And Delivery Mechanism Integrated Simulator



Demonstrate the fetus, umbilical cord and placenta of vacuum-assisted delivery, flexible fetal joint, and multiple normal and abnormal positions of fetal delivery can be showed;

Equipped with manual delivery mechanical parts; by manual, the whole delivery process, including engagement, descending, flexion, internal rotation, extension, restoration, external rotation and fetal delivery, can be showed;

Can practice and master the comprehensive skills of normal labor, abnormal labor (dystocia), midwifery and perineum protection;

Equipped with soft elevated cushion for Leopold Maneuver practice.

Equipped with models for cervical and vaginal examination practice before and at birth;

Component: B (Fetus for Demonstration) + C (Matrix for Manual Delivery Demonstration) +

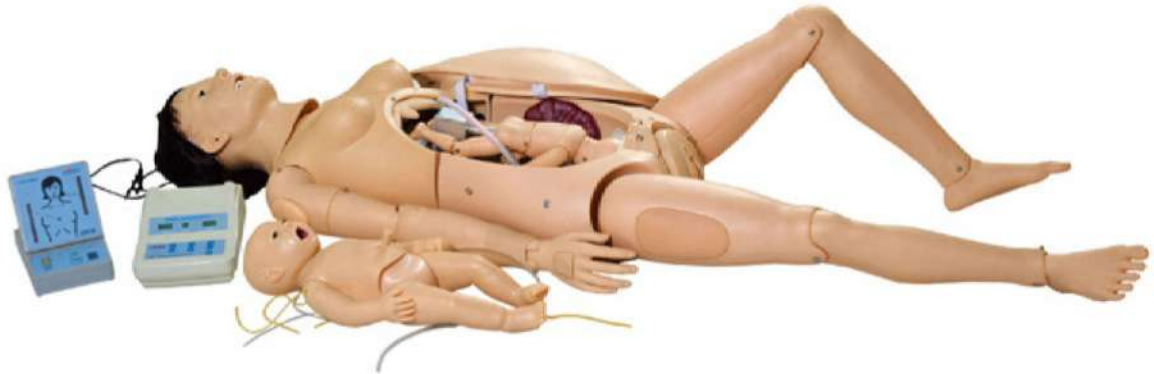
D (Cervical Changes Models) + E (Lifting "Soft Pad" for Leopold Maneuver Practice)

LC-F20 Child Birth Skill Training Simulator



Cervix check model: Size of cervical ore, effacement of fetal canal and the position of fetal head corresponding to the plane of ischial can be checked. Fetus model: The side is soft and fontanel is visible. Vacuum extraction, umbilical cord ligation, and placenta expulsion can be exercised. Childbirth model: The model consists of transparent abdominal well and lifelike side. Simulate normal or difficult labors, assist delivery, and perineum protecting. Perineum cutting and suturing training simulator The simulator can be used repeatedly. One set of the simulator consists of three components: separately simulate the right posterior, left posterior incision or median incision.

LC-F55 Advanced Delivery Maternal and Neonatal Emergency Simulator



Advanced Delivery Maternal and Neonatal Emergency Simulator is a comprehensive education system, which consists of a delivery maternal manikin and a normal newborn, according to the basic requirement of obstetrics, providing a complete birth experience and emergency skills operation. Simulator features include automatic delivery system, fetus and placental expulsion, Prenatal cervix examination and postpartum episiotomy, prenatal gravida and fetus and postpartum maternal and neonatal care, removable stomach covers multiple fetal hearts sounds auscultation and CPR operation etc. The Model is made of High-Quality PVC Material. The stomach wall is injection molded. The perineum is made of sponge emulsion material, features soft texture, good flexibility, realistic operation, reasonable structure, and durability. It is one of the ideal teaching aids for clinical obstetric practice Training.

- Delivery and adult emergency used maternal manikin
- Emergency and nursing neonatal manikin
- Child birthing fetus
- Delivery process and fetal heart sound controller
- Adult CPR electronic display
- Simulative cervical os
- Antepartum cervical changes and birth canal relation modules
- Post partum 48 hours uterus
- Postpartum perineum incision and suturing modules
- Simulative placenta/umbilical cord
- Lifting "Soft pad" for Leopold maneuver practice
- Other auxiliary utensils
- Equipped with lifting "Soft pad" for practicing Leopold maneuver; Equipped with antepartum cervical change and birth canal change modules, which can be fitted to maternal manikin for training; Stage 1: no dilation of cervix; cervical canal does not disappear; the position relation between fetal head and ischial spine plane is -5; Stage 2: 2 cm cervical dilation; disappearance 50% of cervical canal; the position relation between fetal head & ischial spine plane is -4; Nursing features: eye irrigation and drops, neonatal washing and bandaging
- Oral and nasal intubation, infant sputum suction, tracheal intubation and gastric lavage
- Infant umbilical cord nursing, scalp vein puncture, arm venous puncture, there is obvious feeling for venous puncture, and blood flash back indicated correct puncture

LC-1A Child Trachea Intubation Model



Anatomically accurate mouth, larynx, trachea, oral and nasal intubation. The neck should be backward in order to open airway. Insufflating air into the tube so as to verify whether the tube position is right.

LC-J15 Neonate Intubation Training Model



Realistic anatomy of neonate Oral and nasal intubation. Lifelike material Directly observe the expansion of lungs and stomach by insufflating air into the tube and stomach so as to verify if the tube position is right.

LC-3A Infant Trachea Intubation Model



Realistic anatomy: tongue, pharynx, epiglottis, larynx, chordae vocals, trachea, Oral and nasal intubation, Lifelike material, Simulate head tilt to operate conveniently, Directly observe the expansion of lungs and stomach by insufflating air into the tube and stomach so as to verify if the tube position is right.

LC-J5S Electronic Trachea Intubation Model



Accurate anatomical marks Oral or nasal cavity intubation. Wrong operation, stomach inflation or laryngoscope compressing the teeth will activate warning, prompting One proper pupil and another mydriasis.

LC -J55 Multifunction Airway Management Model



Anatomically accurate full size mouth, tongue, airway and esophagus. Perfect for placement of endotracheal tubes. Respiratory sound auscultation. Oral, nasal intubation. Oral, nasal suction.

LC -J50 Airway Intubation Simulator



Accurate anatomical marks Oral or nasal cavity intubation. It allows observing the suction position from side face so as to instruct correct method of the intubation skill. Wrong operation, stomach inflation or laryngoscope compressing the teeth will activate warning prompting.

LC- Adult Tracheotomy Care Model



Precise anatomy: pharynx, epiglottis, trachea, esophagus, position of tracheotomy, cricoid and left, right bronchial trees. Tracheotomy care training Sputum suction training, suction via oral and nasal cavity, tracheostomy tube suctioning, clean and care of tracheal cannula.

LC- Child Tracheotomy Care Model



Precise anatomy: pharynx, epiglottis, trachea, esophagus, position of tracheotomy, cricoid and left, right bronchial trees. Tracheotomy care, Suction via oral cavity, Clean and care of tracheal cannula.

LC-70-1 Nasogastric Feeding and Tracheal Intubation Care Simulator

Features:

Hair and face washing, Eye and ear washing and administering Mouth cavity care, Endotracheal intubation, Oxygen inhaling, Nasogastric intubation, Sputum suction, Oral and nasal cavity intubation, Carotid artery pulse.



LC - FA5058 Tracheotomy and Endotracheal Intubation Model

Standard tracheotomy position, touchable trachea for locating cutting position Accurate structure: thyroid cartilage, cricoid cartilage, crico-thyroid membrane Practice percutaneous thyrocricoid puncture, cricothyrotomy, tracheotomy Different cuttings: vertical, horizontal, cross shape, "U" shape, reverse "U" shape Replaceable trachea and neck skin.



LC-442 IV Injection Pad



Wearable design Replaceable skin and blood vessel Venipuncture I.V., transfusion, blood sampling, etc. Repeating practice on same spot.

LC-S12 Intramuscular Injection Model



This model consists of skin, muscle layer. Wearable design makes it a convenient simulator for training.

LC- S12A Intramuscular Injection Pad



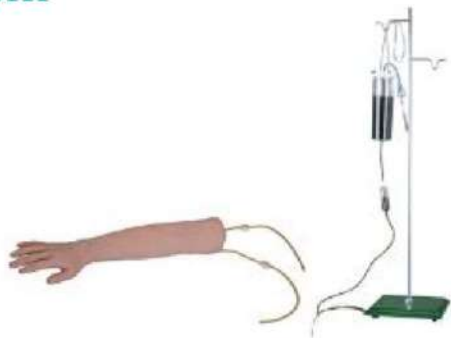
The model consists of skin, subcutaneous tissue and muscle layer. Can be used for intradermic injection, hypodermic injection and intramuscular injection. Wearable design. Injection liquid can be injected into it, squeeze the pad after use.

LC-L60 Lumbar Puncture Model



The model features replaceable tissue inserts, durable spine and dura that accurately recreate the feel of puncturing the dura and the collection and measurement of CSF. Can separate spine and replaceable tissue.

LC-434 Injectable Training Arm



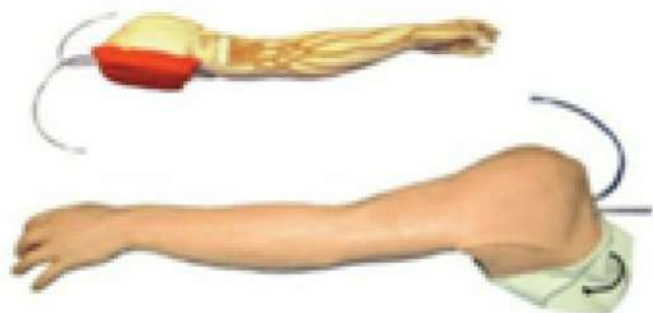
This arm model can demonstrate the following items: Vein phlebotomy on elbow forearm, Vein injection on elbow forearm, Vein blood transfusion on elbow forearm, Vein liquid transfusion on elbow forearm.

LC -HS2 Multifunctional Adult IV Training Arm Model



This is a full-size adult arm, designed for practice of venipuncture and injection. The manufacturing quality of the arm should provide many sessions of training. Items Included, Full-size arm (1), Adjustable transfusion stand (1), Set of transfusion ((1), Replacement skin (1), Replacement deltoid injection pad (1), Rubber tube clamp

LC -HS39 Full Functional Vein Injectable Arm



Venous access: Basilic V Cephalic V Digital V Dorsal Metacarpal V Median Basilic V Accessory Cephalic V Extensive venipuncture system Median Antebra chial V Median Cephalic V Median Cubital V Thumb V. This revolutionary training arm provides complete venous access for IV therapy and phlebotomy, plus sites for intramuscular and intradermal injections. An extensive 8-line vascular system allows students to practice venipuncture at all primary and secondary locations, including starting IVS and introducing OVER the Needle IV Catheters. The venous system simplifies setup with only one external fluid bag supplying artificial blood to all veins simultaneously. The dorsal surface of the hand includes injectable metacarpal, digital, and thumb veins. The antecubital fossa includes the median cephalic, median basilic, and median cubital veins. Venipuncture can also be performed along the basilica, cephalic, accessory cephalic and median antebrachial veins. Intramuscular injection may be performed in the deltoid muscle and intradermal injection sites are located in the upper arm. Intramuscular injections into the deltoid muscle are enhanced by the soft, lifelike skin and by the natural bony landmarks in the region. Intradermal injections using distilled water will create characteristic skin welts at designated sites on the upper arm. The realism of the Advanced Venipuncture and Injection Arm is truly amazing. The soft, flexible fingers are molded separately with extreme attention paid to every detail-right down to the fingerprints! Flexion of the wrist helps students develop manipulation skills. A discernable "pop" is felt when entering the veins. The molding process reproduces the fine details of the skin to make the arm look and feel alive. Valves in the veins can be seen and palpated on the skin surface.

LC-HS8 Multifunctional Child IV Arm



Simulates the arm of child (4 years old). Life like arm reproduction with multi-vein system designed for peripheral intravenous therapy.

LC-H2034 Child Artery Puncture Arm



Replica of a child hand; Manually squeeze the bulb to simulate the radial pulse and fix the injection site. Supports radial artery puncture, haemostasia and transfusion, and there will be obvious "Pop" feeling when the needle penetrates into the artery, and blood backflow indicates proper puncture.

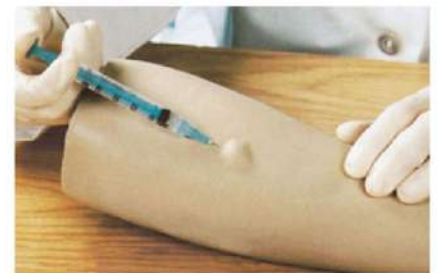
LC-S16 Advanced Intravenous Transfusion Model

Simulate left leg and design the skeleton, skin, muscle and blood vessel. There is obvious feeling when needle penetrates into the vein and blood flash back indicates proper insertion.



LC-S11 Arm Intradermal Injection Model

1. There are eight positions for intradermal injection.
2. Every position can be injected for hundred times.

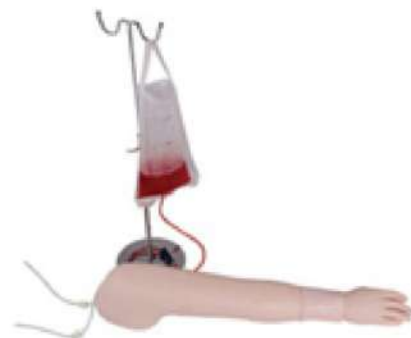


LC-S6 Electronic Upper Arm Intramuscular Injection Model



Imitate shoulder and upper limb structure of adult simulation, compact design lightweight, and closer to the real environment. At the same time, the skin texture is very realistic, is not obvious needle marks. Red light and sound will alarm if injection is too deep or the position is wrong. Allow the injection of simulated liquid discharged from the drain pipe.

LC-NS6005 Multifunctional Intravenous Injection Arm Model



Simulates an adult arm with veins and arteries attached inside. The durable material help to make a very good skin touch feeling. Various Intravenous injection training could be practiced through the veins attached to this simulator, including cephalic vein, basilic vein, median cubital vein, median antebrachial vein, and dorsal venous rete of hand. Intramuscular and hyper dermic injection.

LC-431 Buttocks Intramuscular Injection Model



There's a mark to show the right position for injection. The inject pad can be taken out for replacement.

LC-431A Electronic Buttocks Injection Training Model



Alarming sounds indicate whether the injection is correct. This model can be worn on.

LC-HS17 Advanced Insulin Injection Training Pad



This injection pads has a fabric elastic band to tied to the upper arm or thigh, increase the realism of the operation. Wearable design. Simulator training.

LC-HS10C Adult Intramuscular Injection Training Manikin



Structure of left gluteal: osteal marks, gluteal muscles, ischiadic nerve and veins Left gluteal can be taken off. So it is easy to observe internal structure and make sure position of chiadic nerve and veins. Gluteal intramuscular injection training

LC-HS10B Advanced Buttocks Intramuscular Injection Simulator



The transparent left side of the model shows internal structure including bones, muscles, nerves and veins, facilitating to compare left side with right side and avoiding damaging the nerve and veins. Correct intramuscular injection sites can be palpated. A buzzer and two color flashing lights will warn students if the needle position is incorrect.

LC-L65B Infant Bone Marrow Puncture Model



Provide infant legs tibia puncture operation and realistic sense of needle; there is an obvious feeling when needle penetrates into veins and outflow of simulated bone marrow; Recovery of pinhole on facies osses; Provide four side puncture of the tibial rod.

LC-L-65B Bone Marrow Puncture and Femoral Venipuncture Simulator



Helps intraosseous infusion training. With femoral venipuncture simulator, femoral venipuncture can be simulated too. There are realistic anatomy of whirbone and shinbone. If intraosseous puncture is succeeded, you can feel a "pop" And liquid return can be obtained. The puncture structure can be replaced. 10 sets of puncture bone are supplied with the model.

LC-LV18 Surgical Suturing And Bandage Simulator

The simulator provides commonly used surgical incisions, which simulate all kinds of female thoracic and abdominal incisions, tube drains and amputation stump. Can practice wounds treatments of washing, disinfecting, changing dressing, bandaging and etc. The skin is dry, soft and flexible, allowing the bandages to adhere better.

Features: Thyroidectomy, Mid-sternal split - with two chest tube drains, Right mastectomy - with simulated drain, Right cholecystectomy - with simulated T-tube, Laparotomy, Appendectomy, Left colostomy, Right ileostomy, Abdominal Hysterectomy (transverse incision), Left nephrectomy (thoraco-abdominal incision), Right nephrectomy (oblique incision), Laminectomy, Sacral decubitus ulcer - stage 2 and Right thigh amputation stump



LC-LV8 Surgical Knotting Skill Training Model



The material is transparent plexiglass. So instruction and training can be observed directly. Almost all kind of surgical knotting methods can be performed on this model. Simulative veins can be replaced.

LC-LV20 Abdominal Cutting And Suturing Training Simulator



Abdominal cutting and suturing training, Abdominal wall anatomy: skin, subcutaneous tissue, abdominal muscle and peritoneal membrane. Inflate the balloon in peritoneal cavity and the abdominal wall will be under tension. The aim for the trainee is to enter the peritoneal cavity and close it again without bursting the balloon(damaging the intestines).

LC - Suture Practice Pad Without Precuts

Has 3 distinct layers- skin (epidermis), fat, and muscle. It has been designed to offer no tears while suturing. Can be used to practice suturing, knot tying, suture removals and wound closures. Material offers real human tissue feel.

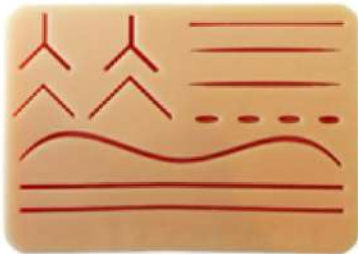


LC-CS6206 Suture Practice Pad with Stand

It can be used to simulate basic surgical skills such as cutting, suturing, bandaging etc.



LC - Suture Practice Pad with 14 Precuts



Realistic and Durable skin, fat and muscle layers. High Grade Theatrical Silicone. Nontoxic, odorless and hypoallergenic. Precut Wounds.

LC - Suture Practice Pad Dual



Made from High quality Silicone with 3 layers containing Skin, Fat & Muscle layers. Realistic and Durable skin, fat and muscle layers.

LC -LV1 Advanced Surgical Suture Arm



helps student to practice suturing, cutting, en-swathing and stitches release student can cut the arm in other place for the training of new suturing in case initial wounds have been sutured flexibility and elasticity of the skin.

LC - Suture Practice Pad with 31 Precuts



Made from High quality Silicone with 3 layers containing Skin, Fat & Muscle layers. Realistic and Durable skin, fat and muscle layers.

LC - Suture Practice Pad with Instrument Kit



KKI suture pad is designed to practice all basic and advanced suturing techniques, namely-simple running simple interrupted, running lock, horizontal mattress, vertical mattress and subcuticular suturing. Mimics real tissue- built in 3 layers to replicate skin, fat and muscle. Made up of non toxic durable silicon material.

LC-LV2 Advanced Surgical Suture Leg



Allows medical students to practice: Cut, Suturing, Stitches release and En-swathing Features: Highly elastic and Flexible

Practice advanced techniques and suturing lacerations on the more delicate surfaces of body. Every component of our products are engineered to give a realistic suturing experience.

LC-SP002 Simulation Ear Suture Pad



LC-SP003 Simulation Nose Suture Pad



LC-SP004 Simulation Eye Suture Pad



LC-SP001 Simulation Lip Suture Pad



LC-SP005 Dental Suture Pad



LC-SP006 Mini Episiotomy / Perineal Laceration Trainer Simulator



1 inch thick tissue, simple geometry laceration on one end. Can make your own as well; to practice deep tissue closure.

LC-28E Dressed Male Catheterization Model (Small)



Demonstrate and practice male urinary catheterization. Teach sterile technique and insertion and removal of urinary catheter. Practice preparing the perineal area for the procedure. New material that has realistic feel and flexibility. 16 Fr catheter can be used to demonstrate balloon inflation procedures. Fluid reservoir allows for urine output upon successful completion of the insertion procedure. Mounted on a training stand and can be used on a tabletop or for patient simulation.

LC-28F Dressed Female Catheterization Model



Demonstrate and practice female urinary catheterization. Teach sterile technique and insertion and removal of urinary catheter. Practice preparing the perineal area for the procedure. Features include: New material that has realistic feel and flexibility. 16 Fr catheter can be used to demonstrate balloon inflation procedures. Fluid reservoir allows for urine output upon successful completion of the insertion procedure. Mounted on a training stand and can be used on a tabletop or for patient simulation.

LC-H17E Male Catheterization Training Model



General urethral Catheterization process can be operated. There is resistance when advancing the catheter through mucosal fold, bulb of urethra and intra urethral sphincter.

LC-H17F Female Catheterization Model



General urethral Catheterization process can be operated. There is resistance when advancing the catheter through mucosal fold, bulb of urethra and intra urethral sphincter.

LC- NS6070 Electronic Unisex Catheterization and Enema Model



Male urethral catheterization: Lift the penis, simulating extending the urethra bend (curvatura prepubica). Gently introduce the catheter into the meatus and slowly advance it through the urethra (through cavernous body of urethra, membranous urethra and prostatic urethra). If the operation is correct, the green light will power on. Advance the catheter about 18~20cm and the red light will power on. The return of urine into the collection tubing signifies that the catheter is in the proper position. Female urethral catheterization: Gently introduce the catheter into the meatus and slowly advance it proximally 4cm through the urethra. Enema: Introduce the catheter into the anus and advance it about 10cm through the anal canal.

LC -L66 Thoracentesis Drainage Model

The Pneumothorax decompression, closed chest drainage of hydropneumothorax and drainage tube care after operation can be practiced. There are two visual windows in right thorax to show each layer of anatomical structures. Pneumothorax decompression training, closed drainage of hydropneumothorax training and thoracocentesis training in the left thorax. The color, volume and viscosity of the drainage solution can be regulated. The puncture cushion and drainage wounds cushion can be replaced.



LC -Q7 Pneumothorax Training Model



The half body male structure can be practiced for pneumothorax decompression. Use pneumothorax needle to exercise decompression of tension pneumothorax. The lung bag can be used repeatedly.

LC -L60A Neonatal Lumbar Puncture Model



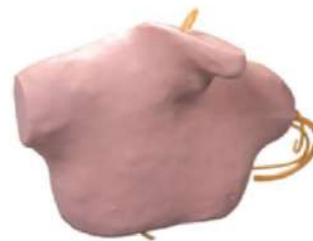
Modeled on the baby life-size, lie on the side, could also simulated the sitting. Accurate sign of bone: the spinous process of the gap, the posterior superior iliac spine. Puncture site: 3-4 lumbar gap. The puncture correct simulation of cerebrospinal fluid outflow. With spare spinal and needle.

LC-L68A Full Functional Central Injection Torso Model



internal jugular artery, carotid, subclavian vein, femoral artery and vein; puncture training of internal jugular vein, subclavian vein and femoral vein; long cannula catheterization training; simulative carotid and femoral artery pulse; subclavian anatomy structure; femoral anatomy structure

LC-L69B Central Venous Puncture and Catheterization Model



Precise anatomical structure: suprasternal notch, clavicle, right cervical ribs, sternocleidomastoid and etc. Lifelike vessel structure: internal jugular vein, external jugular vein, subclavian vein and brachiocephalic vein. The puncture of internal jugular vein and Subclavian vein and heart catheterization can be practiced. The skin and veins can be replaced and students will feel an apparent "pop" when the needle has been thrust into the vein.

LC/L-1017 PICC Intervention Simulator



1. Adult's upper body made from special material, and the internal anatomical structure is distinct.
2. Transparent cyclic system: cephalic vein, basilic vein, jugular vein, subclavian vein, precava and heart; the whole process of the catheter entering precava can be seen.
3. Demonstration and practice of central and peripheral venipuncture can be done.
4. Osseous landmarks are distinct, which is good for practice in measuring the length of the intubated catheter.

LC-F9G Vasoligation Training Simulator



1. The model is a simulative adult torso with right arm. There are apparent anatomical marks: clavicle, suprasternal notch, sternocleidomastoid muscle, pectoralis major muscle, ribs and deltoid muscle.
2. Lifelike veins: superior vena cava, internal jugular vein, subclavical vein, cephalic vein, basilic vein and median cubital vein, etc.
3. With apparent anatomical marks, the model can be used to practice the puncture of internal jugular vein, subclavical vein, cephalic vein and heart catheterization.
4. The skin and veins can be replaced. Students will feel an apparent "pop" when puncture needle has been thrust into the veins.

LC/LV13 High-Set Bandaging Model



1. Simulate head and neck, chest and upper limb amputation patient, right arm cut off from the wrist, left hand cut off from the elbow;
2. Provide many kinds of bandaging method: circular bandage, spiral bandage, serpiginous bandage, figure of eight bandage, capeline bandage, masklike bandage, monocular bandage;
3. Demonstrate the fixing method of the two broken end after wrapping the bandage;
4. Keep arms a little external rotation to facilitate the bandaging.

LC /LV12 Low-set Bandaging Model



1. Simulate leg amputation patients, right leg cut off below the knee, left leg cut off in the middle of the thigh;
2. Convenient and reasonable model design, bandages can bypass the buttocks and wrap to the ridge level of the iliac;
3. Circular bandage, spiral bandage, serpiginous bandage, figure of eight bandage;
4. Demonstrate the fixing method of the two broken end after wrapping the bandage;

LC-H90E Decubitus Ulcer Care Simulator



- 4 stages of ulceration
- Decubitus ulcer kinds: sinus, fistula, corruption scab, infection, bone exposure, eschar, suturing incision, Herpes and Monilia infection.
- Incision washing, evaluation and measurement
- Size: 37cm*19.5cm*29.5cm

LC-H57 Advanced Blood Pressure Training Arm Model



Through this Arterial blood pressure measurement training can be run on this simulator. It provides the sound of Korotkoff Gap. The contraction pressure and diastolic pressure can be set individually before practice. The numerical value of the contraction pressure and the diastolic pressure can be set in any value. Pressure value is indicated by mm Hg. The setting precision can be as low as 1 mm Hg. Audio volume is adjustable. A monitor is used in practice.

LC-CK817 Pericardial Puncture and Intracardiac Injection Simulator

The simulation model takes the slope lying position, the texture is soft, the touch is real, and the appearance is vivid. Accurate anatomical position: The sternum, xiphoid, ribs, and intercostal spaces can be clearly palpated, and liquid is automatically pumped into the pericardial cavity to automatically form pericardial effusion. Feasible pericardial cavity puncture training, the puncture site is usually at the angle between the xiphoid process and the left rib arch, the puncture point of the apex is at the left sixth intercostal space, 2 cm inside the heart dullness, and the puncture needle has a more obvious sense of empty, You can draw out the liquid. The intracardiac injection site is 2cm from the left sternal border of the left four ribs. When the puncture is correct, there is a more obvious sense of emptying that can draw blood, and intra-cardiac injection training can be performed.



LC -L64 Peritoneal Dialysis Simulator



Designed to introduce the essentials of CAPD procedures and care. The torso offers a realistic method to demonstrate and practice peritoneal dialysis. Success with CAPD is dependent on the patient's following dialysis procedures.

LC /F-0031 Subcutaneous Embedded Contraception Arm



- 1.Imported material, realistic model, simulating left upper arm and lampros layer, and be mounted on the base plate.
2. Exercise of subcutaneous embed and dislodging contraceptive material;
3. Skin can be fixed

LC /LV17 Advanced Nasal Hemorrhage Simulator



1. Simulate an adult head and neck;
2. Accurate anatomic structure with nasal and nasal septum;
3. Simulate all clinical symptoms of epistaxis and train students ability to deal with contingency;
4. Provide trainings of simple hemostasis, cauterization and nasal packing;
5. Green light indicates successful hemostasis;
6. Can control the speed and amount of bleeding

LC -LV39 Advanced Rectal Touch Examination Simulator



Prostate examination mainly relies on rectal touch, which is the most simple examination method for BPH and must be carried out. Clear anatomical structure: prostate gland, glandular seminalis, rectum and anus; Four prostate palpation modules: normal size as chestnuts, I degree of hyperplasia as egg, II degree of hyperplasia as ducks egg, III degree of hyperplasia as gooses egg; Four rectal touch modules: normal rectum, rectum cancer A, rectum cancer B, portetopolypus; Cervical canal module; Support enema operation

LC-LV14 Advanced Ocular Inspection Simulator of Retinotherapy



Replacement of different eyeground diseases, slide simulates common clinical oculopathy, including: Normal retina Age-related retina macular degeneration /colloid bodies Central retinal vein occlusion Hypertensive retinopathy, Papilledema, Excavation of optic disc, Optic atrophy, Mild background diabetic retinopathy, Background(pure) diabetic, retinopathy Pre-proliferative diabetic retinopathy, Pre-proliferative diabetic, retinopathy, Hypertrophic diabetic, retinopathy Diabetic retinopathy, Realistic affection, easy to replace and operate. In favor of repeated contrast observation. Provides 15 kinds of retinopathy accessories.

LC-LV16 Advanced Ear Inspection Simulator



Simulation of right ear, standard intra-aural examination site Accurate anatomical structure of auricle, external auditory canal, tympanic membrane. Ear lesion examination via otoscope. Provide 14 kinds of ear lesion components for conveniently replacing Include: Normal auricle, Normal ear drum, Tympanic membrane hyperemia, Otopiesis, Small tympanic membrane perforation, Whole tympanic membrane perforation, Traumatic perforation of tympanic membrane, Myringotomy and tube insertion, Tympanosclerosis, Tympanosclerosis crescentic sclerosis plaques, Serous otitis media effusion, Early acute congestive otitis media, Chronic suppurative otitis media, Pearly tumor and Osteoma of external auditory canal. Earwax clean-up operation practice.

LC-H35 Enema and Assisted Defecation Training Simulator

Simulate bed patient and old people, who can't defecate by themselves. The abdominal wall can be opened so as to directly observe the operation. Disassembly and washing is very simple.



LC-38 Ostomy Nursing Model

The anatomy of colostomy and ileostomy are carefully reproduced to provide life like functions and appearance. The model can be operated in erect position or side - lying position. Intubation feeding can be actually operated in the ileostomy.



LC-L63 Prostate Examination Simulator

Demonstrates eight separate prostate glands supplied with the torso. Each gland can be inserted into the prostate torso to allow realistic practice in diagnosis by rectal palpation. Realistic reproduction of an adult lower part with standard posture for prostate examination; Anatomy of rectum, genitalia, normal and abnormal prostate; Eight separate prostate glands are supplied with the torso: Normal prostate gland with distinct intermediate sulcus; Prostatic hyperplasia: the smooth and tenacious prostate gland enlarges highly and intermediate sulcus disappears; Acute prostatitis; Acute prostatitis with abscess, showing hard and highly enlarged prostate gland; Benign, slightly enlarged; A discrete, hard nodule is palpable in the upper right quadrant, simulating the early stage of prostate tumors; The spread of carcinoma is demonstrated in this gland, and the small nodule changes into a mass; Gland totally replaced with carcinoma. Perform prostate massage.



LC-XD-1 Cardiopulmonary Auscultation Training Vest



1. Collects most common clinical norma and pathological heart sounds and breath sounds;
2. Wearable design
3. Teacher can choose different heart and lung sounds at random for students' diagnosis
4. Multiple auscultation sites for heart sounds and lung sounds are built in the front chest, back and midaxillary line, etc.
5. Choose different sounds via remote control for auscultation exercise.

LC-TCZ001 Auscultation Manikin



1. Half-body male manikin
2. Rotatable, convenient to maintenance and delivery
3. Resonance cavity structure principle makes cardiopulmonary sound fully save and keep tone
4. Over 80 kinds of Hi-fi auscultatory sounds

LC-H2 Multifunctional Nursing Manikin (Female)



- Hair and face washing, hair combing and sponge bath
- Mouth cavity care
- Endotracheal intubation
- Oxygen inhaling
- Nasal feeding
- Gastrolavage
- Intracardiac injection
- Closed chest cardiac resuscitation
- Mammary Nursing
- Thoracic, Liver, Celiac, Medulla, Lumabar, Deltoid puncture
- Chest drainage
- Deltoid subcutaneous injection
- Vein puncture and vein injection
- Blood transfusion (Arm)
- Vastus lateralis injection
- Female urethral catheterization
- Female bladder irrigation/ clyster
- Buttocks intramuscular injection

LC-H2M Multifunctional Nursing Manikin (Male)



- Hair and face washing, hair combing and sponge bath
- Mouth cavity care
- Endotracheal intubation
- Oxygen inhaling
- Nasal feeding
- Gastrolavage
- Intracardiac injection
- Closed chest cardiac resuscitation
- Thoracic, Liver, Celiac, Medulla, Lumabar, Deltoid puncture
- Chest drainage
- Deltoid subcutaneous injection
- Vein puncture and vein injection
- Blood transfusion (Arm)
- Vastus lateralis injection
- Male urethral catheterization
- Male bladder irrigation/ clyster
- Buttocks intramuscular injection

LC-H100S Full Functional Male Nursing Manikin (Unisex with Organs)



Widely used in first aid and emergency rescue as well as the regular nurse training. This model is made according to the normal position and activities of the human body as much as possible. Each model is equipped with male and female genitalia, can exchange to use. Model of the arms, thigh and buttock have injection pads available training. This model is equipped with internal organs, not only for basic nursing, medical care available to use also.

- Bed bathes
- Head nursing: face washing, eye drops, ear drops, oral care.
- Holistic Nursing: sponge bath in bed, sitting sponge bath, wear clothes, cold or heat therapy.
- Oxygen inhaling.
- Nasal feeding.
- Gastric lavage.
- Tracheostomy care.
- Study chest anatomical structure of vital organs.
- Arm intravenous injection, transfusion training.
- Injection Next Deltoid.
- Intramuscular injection.
- Male and female catheterization.
- Enema.
- Percutaneous transrenal stomy.
- Study abdominal cavity anatomical structure of vital organs.

LC-H120 A & B Advanced Nursing and Wound Care Manikin



Full-body lifelike male manikin. Specifically designed for professional nursing training. High quality manikin provides wide range of exercises possible including both first aid and emergency situations.

Head care: hair washing, face washing

- Irrigation of the eyes and ears
- Oral cavity care
- Oral cavity and nasal cavity intubation
- Oxygen inhalation
- Oral and nasal feeding
- Lavage
- Organs structure of thorax
- Vein puncture and injection, transfusion,
- Deltoid injection
- Puncture of thorax, abdominal cavity, liver medulla and lumbar
- Enema
- Urethral Catheterization for male and female
- Irrigation of bladder for male and female
- Ostomy Irrigation
- Gluteus injection
- Organs structure of abdominal cavity
- General care, bed bathes, dressing and undressing
- Wound care: disinfection, dressing change, binding, hemostasia.

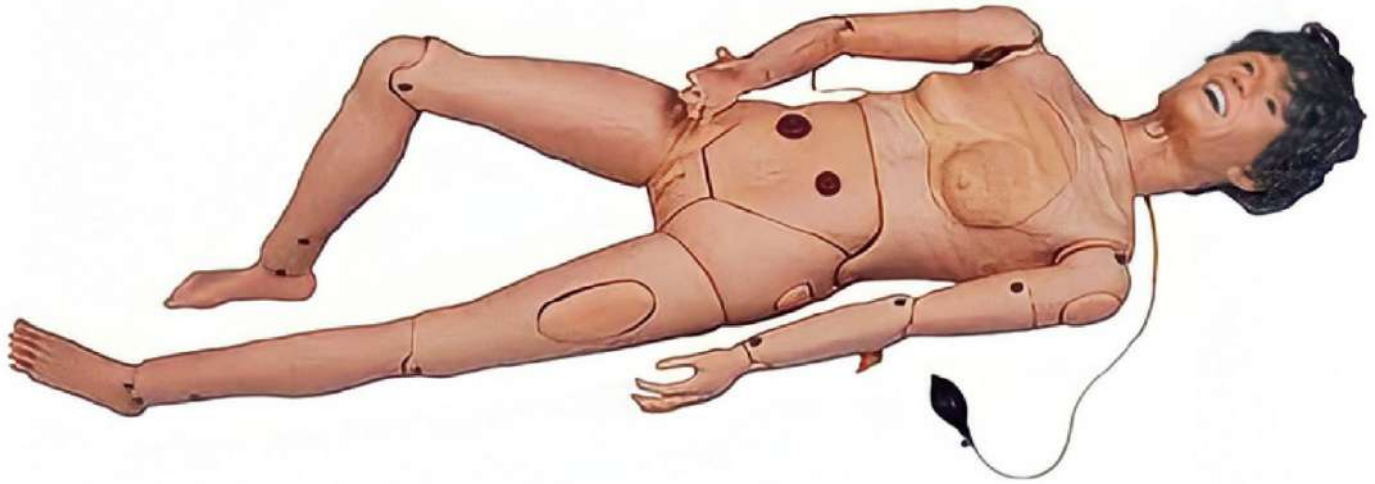
LC-H220A Advanced Elderly Fully Functional Nursing Training Manikin (Male)



The manikin is designed according to the physiological characteristic of old male(H220A) people for the basic clinical nursing training and non-invasive blood pressure simulator; with about 50 kinds of nursing functions; Basic nursing features:

- Hair and face washing.
- pupil observation.
- eye and ear washing and administering.
- removal of insertion of healing aid.
- mouth cavity and artificial teeth care.
- endotracheal intubation
- incision of trachea nursing
- sputum suction
- oxygen inhaling
- oral and nasal feeding
- venipuncture, injection, transfusion arm
- deltoid subcutaneous injection
- vastus lateralis injection
- throtic cavity, abdominal cavity, liver, bone marrow and lumbar puncture.
- enema
- urthral catheterization
- bladder injection
- male prostate examination
- stoma drainage
- colostomy
- buttocks intramuscular injection
- large area of sacral ulcer
- cancer tumor contrast
- cleavage line contrast
- holistic nursing: sponge bath, replacing cloths, cold and hot therapy.
- realistic limb joints , stiff simulated joints, truck may lean forward, can sit in a wheelchair
- truck- rotation and flexibility
- neck: rotation , flexibility and lateral curvature
- shoulder and buttock: endoduction, abduction, rotation, flexibility.
- elbow: internal rotation, external rotation
- knee: internal rotation, external rotation
- wrist: internal rotation, flexibility, stretching and bending.
- korotkoff sound volume in ten steps 0-9
- ankle: introversion, eversion, endoduction, abduction
- non-invasive blood pressure measurement
- systolic and diastolic pressure may be set individually in steps
- systolic pressure 0-300mmHg, diastolic pressure 0-300Hg.

LC-H220B Advanced Full-Functional Elderly Nurse Training Manikin (Female)



The manikin is designed according to the physiological characteristic of female old people for basic clinical nursing training. The product consists of full-body female elderly manikin and non-invasive blood pressure simulator; with about 50 kinds of nursing functions, made of imported PVC material, fine quality, environmental protection, realistic shape as human, easily washable; these help nursing workers understand and care for old people during the nursing process.

- Hair and face washing
- Pupil observation, Pupil LCD is CSTN pseudo-color, 65k color, RGB. Diameter range is 1-9mm. Simulate pupil states freely: normal, mydriasis, and myosis, etc
- Eye and ear washing and administering
- Removal and insertion of hearing aid
- Mouth cavity and artificial teeth care
- Endotracheal intubation, automatically monitor whether the tracheal intubation is correct or not through sensor; support auscultation to detect intubation site
- Incision of trachea nursing
- Sputum suction
- Oxygen inhaling
- Oral and nasal feeding
- Gastrolavage
- Venipuncture, injection, transfusion (arm)
- Deltoid subcutaneous injection
- Vastus lateralis injection
- Thoracic cavity, abdominal cavity, liver, bone marrow and lumbar puncture
- Breast nursing, mammary gland examination
- Enema
- Male/female urethral catheterization
- Male/female bladder injection
- Stoma drainage
- Colostomy
- Buttocks intramuscular injection
- Large area of sacral ulcer
- Cancer tumor contrast
- Cleavage lines contrast
- Holistic nursing: sponge bath, replacing clothes, cold and hot therapy
- Realistic limbs joint, stiff simulated joints, truck may lean forward
- Can sit in the wheelchair
- Truck- rotation, flexibility
- Neck- rotation, flexibility, lateral curvature
- Shoulder and buttock-endoduction, abduction, rotation, flexibility
- Elbow-internal rotation, external rotation
- Knee- internal rotation, external rotation

LC-J110 Advanced Trauma Nursing Training Manikin



Full body life-like male manikin specially designed for professional trauma nursing care. High quality manikin provides wide range of excersies:

Trauma Nursing Skills:-

- Bed bathes, dressing and undressing
- Hair washing
- Face washing
- Irrigation of the eyes and ears
- Oral cavity care
- Oxygen inhalation
- Nasal feeding
- Lavage
- Oral cavity intubations
- Nasal cavity intubations
- Tracheotomy care
- Organs cavity of thorax
- Venipuncture and injection, transfusion
- Deltoid injection
- Male urethral catheterization
- Female urethral catheterization
- Gluteus injection
- Ostomy irrigation
- Organs structure of abdominal cavity

Trauma Evaluating Module

- opened fracture on right hand (including parenchyma, laceration, fracture and bone tissue exposure)
- gun wound in the right palm
- opened fracture in the right thigh bone
- closed tibia fracture on right leg and contusion wounds in left ankle and foot.
- opened numerous fracture of right upper arm
- opened clavicular fracture and contusion wound on the chesta wound in the abdomen with small intension
- evisceration
- compound femur fracture on left thigh
- metal pricking wound in left thigh

- opened tibia fracture of right leg
- opened fracture of right foot with truncating trauma on small phalanx
- burns in left forearm 1st, 2nd and 3rd degree
- truncating trauma on left thigh
- facial burns of 1st, 2nd and 3rd degree
- laceration in forehead
- the wound in jaw

LC - FA6805 Advanced Trauma Evaluation Model

Features:

- Facial burn: 1st, 2nd and 3rd degree
- Laceration in forehead
- The wound in jaw
- Opened clavicular fracture and contusion wound on the chest
- The wound in abdomen with small intestine evisceration
- Opened humerus fracture of right upper arm
- Opened fracture of right hand (including parenchyma laceration)
- Gun wound in the right palm
- Opened fracture of right thighbone
- Compound femur fracture of left thigh
- Metal pricking wound in right thigh, Opened tibia fracture of right leg
- Opened fracture of right foot with truncating trauma on small phalanx
- Burns in left forearm: 1, 2, 3 degree
- Truncating trauma on left thigh
- Closed tibia fracture of right leg and contusion
- wounds in left ankle and foot



LC - J112 Standard Patient for External Fixation Training Simulation in First Aid of Limb Fracture



This product is the simulation nurse. It can be put in various positions according to the need, widely used in all kinds of first aid teaching and practical operation.

Features:

1. Simulate closed limb fracture trauma. Students can be familiar with the signs and symptoms of fracture and conduct first-aid external fixation training.
2. Simulation included closed fractures of radius and ulna in the forearm of the upper extremity, tibia and fibula in the lower extremity, and complex injuries in the thigh.
3. For perform the cleaning, disinfection, dressing, reduction, fixation and handling of the wound site training.

LC-H-106 Basic Nursing Manikin



MALE VERSION ALSO AVAILABLE

Features:

1. Hair and face washing
2. Eye and ear washing and administering
3. Mouth cavity and artificial teeth care
4. Breast care
5. Postoperative care for tracheotomy
6. Oxygen inhaling
7. Nasal feeding
8. Gastrolavage
9. Ostomy care
10. CPR simulation
11. Chest Cavity Puncture (no liquid)
12. Lumbar puncture (no liquid)
13. Venipuncture, injection, blood transfusion (Arm)
14. Deltoid subcutaneous injection
15. Buttocks intramuscular injection
16. Vastus lateralis injection
17. Female bladder irrigation
18. Female urethral catheterization
19. Enema
20. Holistic nursing: flexible limbs joints, sponge bath, clothes changing, cold & hot therapy.

LC- H-105 Advanced Unisex Nursing Manikin with Organs



MANIKIN WITH EXCHANGEABLE BREAST AND GENITALIA



1. Hair and face washing
2. Eye and ear washing and administering
3. Mouth cavity and artificial teeth care
4. Pupil observation: one normal, the other mydriasis
5. Postoperative care for tracheotomy
6. Oxygen inhaling
7. Nasal feeding
8. Gastrolavage
9. Tracheal intubation via mouth
10. Venipuncture, injection, blood transfusion (Arm)
11. Deltoid subcutaneous injection
12. Vastus lateralis injection
13. Buttocks intramuscular injection
14. Enema
15. Male/Female urethral catheterization
16. Male/Female bladder irrigation
17. Ostomy care
19. Holistic nursing: flexible limbs joints, sponge bath, clothes changing, cold & hot therapy.

LC/H-103M Full Functional Nursing Manikin (Male)



Features:

1. Hair and face washing
2. Eye and ear washing and administering
3. Mouth cavity and artificial teeth care
4. Endotracheal intubation
5. Tracheotomy care
6. Oxygen inhaling
7. Oral and nasal feeding
18. Holistic nursing: sponge bath, replacing clothes
19. Limbs joints : bend ,rotation and upper or lower movement * Trauma modules for evaluation and care:
 - 1) Abdomen wall incision and suture incision
 - 2) Thigh section and suture incision
 - 3) Tear of the thigh skin
 - 4) Infectious ulcer of thigh
 - 5) Foot trauma
 - 6) Amputation stump of upper arm
 - 7) Amputation stump of leg.

8. Gastrolavage
9. Venipuncture, injection, blood transfusion (Arm)
10. Deltoid subcutaneous injection
11. Vastus lateralis injection
12. Thoracic cavity and lumbar puncture
13. Enema
14. Female/male urethral catheterization
15. Female/male bladder irrigation
16. Ostomy
17. Buttocks intramuscular injection

LC/H-107M Multi-functional Nursing Manikin (Male)

Artery Pulse, BP, CPR and Auscultation



7. Pupil observation: one normal, the other mydriasis
8. Ostomy care
9. Lumbar puncture (without liquid)
10. Arm venipuncture, injection and transfusion (Arm)
11. Deltoids subcutaneous injection
12. Lateral thigh and buttocks intramuscular injection
13. Urethral catheterization (male/female)
14. Bladder irrigation (male/female)
15. Enema
16. Buttock ulcer care
17. Diabetic foot care
18. Holistic nursing: sponge bath, replacing clothes, cold and hot therapy
19. Limbs: much more flexible joints, easier for movement

1. Hair and face washing, hair combing
2. Eye and ear washing and administering
3. Oral care and artificial teeth care
4. Tracheotomy care
5. Oxygen inhalation
6. Nasal feeding and gastric lavage
- Trauma modules for evaluation and care: disinfection, wound enswathing and hemostasis, including:
 - 1) Chest incision and suture demonstration
 - 2) Abdominal wall incision and suture demonstration
 - 3) Thigh incision and suture demonstration
 - 4) Thigh laceration
 - 5) Amputation stump of upper arm
 - 6) Amputation of leg
- * CPR simulation (Male) *

LC /H-107F Multi-functional Nursing Manikin (Female) FUNCTIONS:- Artery Pulse, BP & Woundcare



1. Hair and face washing, hair combing
 2. Eye and ear washing and administering
 3. Oral care and artificial teeth care
 4. Tracheotomy care
 5. Oxygen inhalation
 6. Nasal feeding and gastric lavage
 7. Pupil observation: one normal, the other mydriasis
 8. Ostomy care
 9. Lumbar puncture (without liquid)
 10. Arm venipuncture, injection and transfusion (Arm)
 11. Deltoids subcutaneous injection
 12. Lateral thigh and buttocks intramuscular injection
 13. Urethral catheterization (male/female)
 14. Bladder irrigation (male/female)
 15. Enema
 16. Buttock ulcer care
 17. Diabetic foot care
 18. Holistic nursing: sponge bath, replacing clothes, cold and hot therapy
 19. Limbs: much more flexible joints, easier for movement * Trauma modules for evaluation and care: disinfection, wound enswathing and hemostasis, including:
 - 1) Chest incision and suture demonstration
 - 2) Abdominal wall incision and suture demonstration
 - 3) Thigh incision and suture demonstration
 - 4) Thigh laceration
 - 5) Amputation stump of upper arm
 - 6) Amputation of leg
- * Detachable left and right breasts and supports breast care (Female)

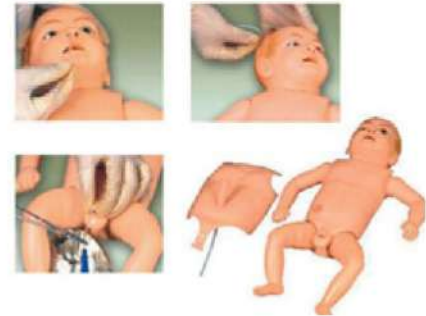
LC /XDT-101 ECG Manikin (Standalone)



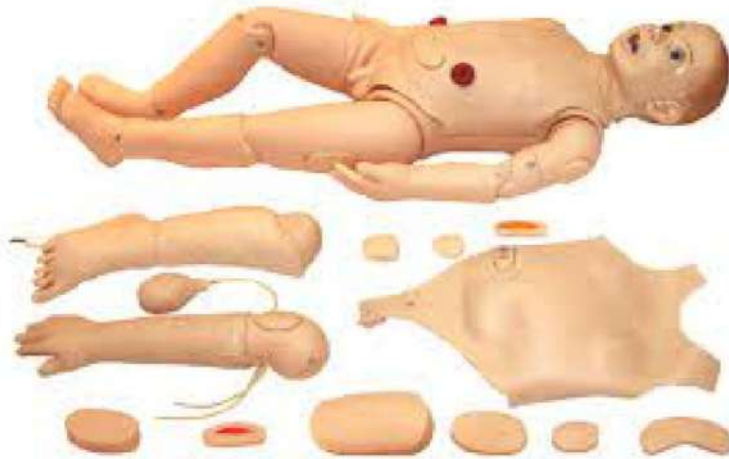
1. The manikin features flexible and elastic skin with marks of the auscultatory site, anti-aging, sturdiness and durability.
2. Controlled by micro-computer; a variety of normal and abnormal ECG signals are stored in the manikin; each ECG signal is showed by the analog-to-digital code.
3. Connect with the common ECG or ECG monitor when using, and connect the lead wire of the ECG machine to the relevant parts of limbs and chest respectively
4. For teaching practice and assessment, operate the code button on the manikin panel and input the ECG code according to your need, then ECG waveform will be automatically described via the ECG machine and monitor
5. Realistic waveform and adjustable heart rate.

LC-H130 Advanced Nursing Baby Unisex

- Movable head, neck, hand and foot, replaceable chest-skin
- Cephalic Venipuncture
- Umbilical Venipuncture
- Oral and Nasal Intubation Nursing
- Care Of Gastrolavage, Enema, and Urethral Catheterization
- Ostomy
- Deltoid Subcutaneous Injection and Buttocks Intramuscular Injection
- Holistic nursing: sponge bath, replacing clothes, lactation and diaper changing

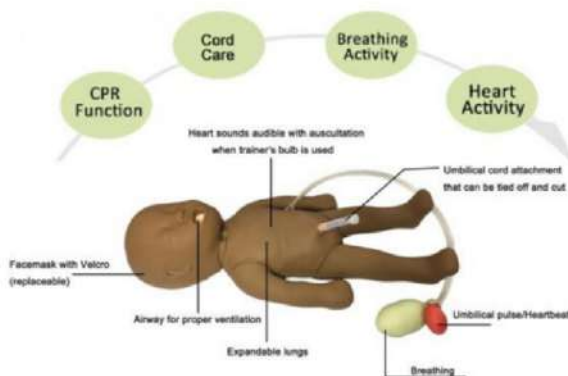


LC-FT333 Advanced Multifunctional Child Nursing manikin Unisex



1. Pupil observation. Bilateral Pupil states: normal, mydriasis.
2. Operations of child care: full body bandage exercise, bathing, changing clothes, hair combing, eye washing and administering, otic drops and irrigation, mouth cavity care, blood collection of finger and TBtest.
3. Airway management: realistic mouth, nose, tongue, gum, pharynx, larynx, esophagus, epiglottis, trachea and tracheal ring, can practice tracheal intubation, sputum suction, oxygen inhaling.
4. Oral and nasal feeding
5. Gastrolavage
6. Venipuncture, injection, transfusion (Arm). There is an obvious feeling when needle penetrates into vein. And blood flash back indicates proper insertion.
7. Intramuscular injection in bilateral deltoid, bilateral vastus lateralis and bilateral buttock.
8. Enema, placement of rectal suppository
9. Urethral catheterization
10. Holistic care: sponge bath, replacing clothes, cold and heat therapy
11. Limbs joints: Bend, rotation, upper and lower movement.
12. Bathing and bandaging activity
13. Ostomy nursing of ileum, colon and bladder.
14. Tibial bone marrow puncture: simulate the process of bone marrow puncture, obvious body surface symbol. Simulated bone marrow would outflow in the case of correct puncture.

LC/J-MBaby Newborn Baby Simulator



KKI/J-MBaby is a newborn baby resuscitation simulator which can be used to practice both standard care and resuscitation of newborns. This simulator has been designed with anatomical landmarks and is designed to be realistic in both size and appearance. Further, it can simulate the presence/absence of heart sounds, umbilical cord pulse and spontaneous breathing. This simulator comes with a durable storage bag and training accessories as detailed below-

1. CPR: supports BVM to mouth, obvious chest rise; and external chest compression;
2. Simulates airway opening
3. Umbilical cord cutting and nursing
4. Equipped with pressure bulbs, manually squeeze the red one, there will be umbilical artery pulse; squeeze the green bulb, there will be spontaneous respiration.

LC-FT335 Advanced Full Functional Neonatal Nursing & CPR Manikin



1. General care: change diapers, change clothes, mouth care, cold and hot therapy, bandaging;
2. Venous transfusion/puncture, arm veins include and Scalp vein includes.
3. Umbilical cord care: ligature of umbilical cord, umbilical venous intubation and transfusion;
4. Gastric intubation: detect tube position by means of auscultation; can practice gastrointestinal decompression, nasal feeding, gastric lavage, etc.
5. Bone marrow puncture: practice tibial puncture; outflow of simulative bone marrow shows proper puncture operation; drug liquid can be injected into and can practice transfusion operation;
6. CPR operation training: Supporting multiple breathing ways by mouth to mouth, mouth to nose and simple respirator to mouth; electronically monitor compression; frequency and volume of blowing, compression times, frequency and depth, blowing and compression can be training separately.

LC- J140 Baby Obstruction / Infant CPR Simulator



- Full-body lifelike baby specifically designed for professional training
- Heimlich manoeuvre
- Foreign-body airway obstruction- This feature provide a realistic condition for releasing of a foreign body obstruction through back blows and chest thrust techniques
- Artificial respiration and external chest compression
- Simulation of natural airway, chest expand when airway opened
- Airway opening and chest compression
- Accurate anatomy, proportion of the standard live baby design

PP-AM-100M Prestan Adult CPR Manikin With Rate Monitor

- Lightweight with fast and simple setup.
- Revolutionary CPR Rate Monitor that allows for instant rate and depth feedback to both the instructor and student.
- Easy to insert lung-bag speeds manikin setup
- Tiltable head illustrates how to open the airway
- Audible click with correct compression depth
- AHA & ARC Approved
- Manikin resists dirt, grime & grease



Professional Adult Series 2000 Manikin

The same high quality, realistic Professional Adult Manikin is now available with Advanced Feedback including Rate, Depth, Recoil, Ventilation and Hands-Off Time via a Bluetooth® enabled PRESTAN CPR Feedback app available on both Apple and Android devices.

Fully compliant with current industry guidelines, including the Heart and Stroke Foundation of Canada's February 2021 *Use of Feedback Devices in Resuscitation Training Courses Policy* and the most recent AHA Integrated Feedback Directive.



Prestan Adult Ultralite Manikin

The PRESTAN Ultralite Manikin is our most portable manikin, easy to transport & ship and simple to set up, use & clean.

Fully compliant with current industry guidelines, including the most recent AHA Integrated Feedback Directive

This durable manikin offers an affordable method for CPR training, with all the quality and realism you expect from PRESTAN.



PP-CM-100M Prestan Child CPR Manikin With Rate Monitor

- Lightweight with fast and simple setup.
- Revolutionary CPR Rate Monitor that allows for instant rate and depth feedback to both the instructor and student.
- Easy to insert lung-bag speeds manikin setup
- Tiltable head illustrates how to open the airway
- Audible click with correct compression depth
- AHA & ARC Approved
- Manikin resists dirt, grime & grease



PP-IM-100M Prestan Infant CPR Manikin With Rate Monitor

- Sculpted body contours and realistic skin feel help prepare students for real life rescues.
- Lightweight with fast and simple setup.
- Revolutionary CPR Rate Monitor that allows for instant rate and depth feedback to both the instructor and student.
- Easy to insert lung-bag speeds manikin setup
- Head simulates the way an actual infant's head would move.
- Tiltable head illustrates how to open the airway
- Audible click with correct compression depth

AHA & ARC Approved Manikin resists dirt, grime & grease



LC-CPR10150 Advanced Infant CPR Training Manikin



Simulating standard open airway.

- External breast compression:
 1. display device and alarm device Indicator light display of correct and wrong compression ; alarm of wrong compression;
 2. Intensity display of correct (1-2 cm) and wrong (<1cm or >2cm) compression; alarm of wrong compression
- Artificial respiration (inhalation): display device and alarm device Inhalation <30ml or > 50ml, wrong indicator light display and alarm prompting; Inhalation between 30-50ml right indicator light display;
- Inhalation too quickly or too much result in air entering into stomach; indicator light display and alarm prompting
- Ratio of compression and artificial respiratory: 30:2 (one person) or 15:2 (two persons)
- Operating cycle: one cycle includes five times of 30:2 or 15:2 ratio of compression and artificial respiration. Operation frequency: at least 100 times per minute
- Operation methods: exercise operation
- Examination of brachial artery response: pinch the pressure ball by hand and simulate brachial artery pulse
- Working conditions: Input power is 110-240V

LC- CPR10160 Advanced Child CPR Training Manikin



- Simulates standard open airway
- External breast compression: display device and alarm device
 1. Intensity display of correct (2 - 3 cm) and wrong (<2 cm - >3 cm) compression; alarm of wrong compression
 2. indicator light display of correct and wrong compression
- Inhalation < 150 - 200 ml or >200ml, wrong indicator light display and alarm prompting; inhalation between 150 - 200 ml right indicator light display.
- Inhalation too quickly or too much result in air entering into stomach; indicator light display and alarm prompting.
- Ratio of compression and artificial respiratory: 30:2 (one person) or 15:2 (two persons).
- Operating cycle: one cycle includes five times of 30:2 or 15:2 ratio of compression and artificial respiration. Operation frequency: at least 100 times per minute.
- Operation methods: exercise operation.
- Examination of brachial artery response: pinch the pressure ball by hand and simulate brachial artery pulse.
- Working conditions: Input power is 110-240V.

LC- CPR10280 Advanced Adult CPR Training Manikin with Monitor and Printer



- Simulates standard open airway, external breast compression
- Display device and alarm device Indicator, light display of correct and wrong compression
- Alarm of wrong compression Intensity display of correct (at least 5 cm) and wrong (5 cm>) compression
- Alarm of wrong compression Artificial respiration (inhalation)
- Display device and alarm device Inhalation <500-600 ml or >600 ml, wrong indicator light display and alarm prompting Inhalation between 500-600 ml right indicator light display
- Indicator light display open airway Inhalation too quickly or too much result in air entering into stomach, indicator light display and alarm prompting Ratio of compression and artificial respiration
- 302 (one or two person)
- Operating cycle One cycle includes five times of 302 ratio of compression and artificial respiration
- Operation frequency At least 100 times per minute
- Operation methods Exercise operation Examination of pupil response
- Myriads and myosis Examination of carotid response Pinch the pressure ball by hand and simulate carotid pulse
- Working conditions Input power is 110-240 V

LC - Practiman Half-Body CPR Training Manikin

- CPR Training Manikin with Audible Feedback on correct depth of compressions (2 - 2.4").
- Provides Practice for Chest Compression and Artificial Ventilation (Mouth-to-Mouth Respiration).
- Chest Rise with Artificial Ventilation With Audible 'Clicker' that Confirms Correct Compression Depth(2-2.4").
- Correct Anatomical Landmarks. AHA 2015 Guidelines Compliant.



LC- CPR-017A Half Body CPR Training Manikin

- Implement standard: AHA(American Heart Association) 2015 guideline for CPR and ECC
- Simulation of normal airway obstruction
- Provide CPR operation practice ; simulation of airway opening and chest compression
- Simulation of the chest expansion when the airway is empty
- Simulation of the suffocation, foreign body obstruction in airway
- Can operate adult Heimlich maneuver
- Simulation of Carotid pulse
- Individual MOUTH/NOSE piece. replaceable; comes with 3 MOUTH/NOSE piece;



LC-CPR190 Half Body CPR Training Manikin with Sound Indicator



1. Simulate standard open airway
2. External breast compression, intensity display of correct (at least 5cm):
 - 1) Buzzing sound of correct compression intensity
 - 2) Alarming sound of wrong compression intensity
3. Artificial respiration (inhalation): the volume of inhalation is observed through observing the wave of breast;

LC -CPR195 Half Body CPR Training Manikin With Light And Sound Indicator



- Simulate standard open airway, External breast compression, intensity display of corrects (at least 5cm)
- The yellow indicator light display of correct compression position Buzzing sound of correct compression intensity, the green indicator light display
- Alarming sound of wrong compression intensity, the red indicator light display Artificial respiration (inhalation): the volume of inhalation is observed through observing the wave of breast;
- Operation methods: exercise operation

LC-CPR2000 Half Body CPR Training Manikin With Monitor



- Pupil demonstration: one mydriasis and the other normal
- Simulate standard open airway and simulate free movements of upper limbs
- External chest compression: display device and alarm device
- Artificial respiration (Inhalation): display device and alarm device 6. Operating period: Ratio of compression and artificial respiration:
 - 30:2 (one or two persons), complete 5 cycles.
- Compression frequency: 100 - 120 times/minute, Compression depth: 5-6cm
- Working conditions: adopts 220V external power source

LC-15200 Half Body CPR & Intubation Training Manikin With Monitor for CPR



- Pupil response : Bilateral pupils contrast observation
- Carotid artery response: pinching pressure the ball to simulate carotid pulse; Chest compressions: Standard airway open;
- Feasible three ways to open the airway, lift jaw with head back, lift the head and neck, lift jaw by hands ;
- Mouth resuscitation and ventilator-assisted breathing, effective artificial respiration has visible chest rise
- Simulate laryngeal mask airway and composite cannula can be inserted into the air way;
- Verify endotracheal intubation is correct or not : a catheter inserted into the trachea, lungs will swell (plastic bladder) when inflated; if the catheter is inserted by mistake esophagus, stomach will swell when inflated (plastic pouch).
- Observed pulmonary respiration Artificial ventilation Oral or nasal intubation and esophageal intubation
- Open the airway and practise from resuscitator bag to breathing mask or from resuscitator bag to the cannula. Respiratory tract is simple and can be replaced Easy to carry, suitable for field training.

Laerdal Little Anne QCPR



- Little Anne QCPR is available with a gaming element and feedback technology. This helps instructors improve both CPR training quality, classroom efficiency and learner engagement.
- Control in the palm of your hand.
- Monitor up to six manikins at a time with the QCPR Instructor app.
- Real-time CPR feedback.
- Check how every learner is performing with feedback on depth, release, rate and ventilations.
- Intelligent scoring and guidance.
- Give every learner tips on performance and improvements with intelligent scoring functionality. Motivate learners to go from from “passed” to perfection.

Laerdal Baby Anne QCPR



The 3-month-old Little Baby QCPR includes features like:

- Head-tilt with open/locked airway
- Feedback on hand positioning
- Visible chest-rise on ventilations
- See and feel the baby’s ribs
- Landmarks, nipples, breast tip
- Limbs with realistic movement
- Durable construction with realistic length and weight
- 2 AA batteries will last for months and are easily changed.

LC-XFT120C+ AED Trainer



- The XFT-120C+ AED Trainers are designed with a replaceable plug-in card allowing the device to be customized by uploading different language and scenario options.
- It is bilingual; also has a Remote Control function. With different cards, one unit can offer different language options.
- A metronome is added to the flashing lights when the unit is counting out the 2 minutes for CPR.
- The sound prompts 100 compressions per minute to help the trainers perform CPR properly.

LC-XFT120C AED Trainer



LC-XFT-D0009 Mini AED Trainer



- Provides a total of 10 pre-programmed scenarios to help responders become familiar with an AED.
- Features : voice instructions for preconfigured scenarios that simulate realistic cardiac arrest situations remote control function five pairs of training pads (adult and pediatric pads) convenient to update the programme in the instance that safety guidelines change

- It has no high-voltage capabilities, ensuring safety during training.
- The device has the function of Voice Broadcast and LED display (Work instructions, electrode pads direction, shock instructions, warning signs). And, when you toggle the switch, it can simulate the electrode pads connected or not connected.
- The device has voice prompts and LED indication during two minutes CPR pause time.

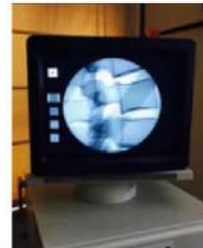
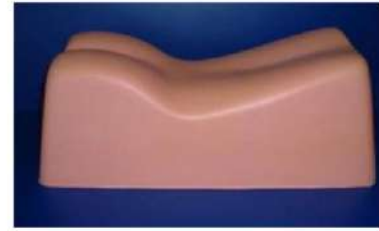
LC- Prestan AED Ultratrainer



The PRESTAN AED UltraTrainer is our most compact, lightweight AED trainer solution with full customization options. The pads have an embedded 'switch' which senses that the AED. Trainer pads are attached to the manikin torso. Compatible with any CPR manikin. Can be used to train in both semi-automatic and fully-automatic versions The silicone base adhesive on the pads, coupled with the foam structure, ensure easy application & removal. Includes a scenario, volume control, and language button. The pads can be used at least 25- 30 times during CPR/AED classes. Metronome and counts upward by 10'sending at 30 to help the student with chest compressions. Module contains the software and the language. When guidelines change, only the module needs to be replaced. Contains a pad testing system. AED Trainer can be easily managed with or without the remote control. Remote is available separately. Supplied with: AED training unit One set of adult pads.

LC- Lumbar Fluoroscopy Manikin

This Spine Surgery Simulator, is developed in order to replace the use of human bodies for surgical training. More ethical, more economical and overall, more convenient than a true cadaver. The standard Lumbo-sacral model contains a T10- to-sacrum spine and also SI joints. If you are interested in medical imaging, the spine is covered with an X-ray opaque coating. The model can be used for training C-ARM guided injection



LC- Cervical Fluoroscopy Manikin

This model features a spine from occiput to T1 with posterior ligament. It can be opened through a posterior or an anterior approach, which make this model quite versatile and allows to train for placing cages, plates or screws always in realistic conditions. The bones come with fluoroscopic coating for using under C-Arm. Can be used by Pain management doctors for Carm guided injection training.



LC- Thoracolumbar Fluoroscopy Manikin



Often considered as an extension of the Lumbar Spine Surgery Simulator, this version features the contours of a quasi-complete human back, from T1 to Sacrum. The principle remains the same: an artificial spine included in a realistic foam mannequin. An X-ray Opac coating is added for medical imaging visibility.

LC- Infant Scalp Intravenous (IV) Injection Practice Model



A simulated infant head with a head venous vascular network. Clearly visible scalp veins are ideal for IV practice on a baby's scalp. Build nurses' and doctors' confidence before scalp vein catheterization and infusion.

LC- Haemostatic Wound Packing Trainer for Medic & Emergency Training

The wound packing trainer with gunshot wound and dry blood is a beginner-level trainer for emergency and tactical medic training. Help develop muscle memory and hone bleeding control skills.



LC- Basic Wound Packing Task Trainer

The dry wound packing task trainer is ideal for teaching wound packing with gauze. Hone gunshot wound packing skills. Widely used in emergency training, medical education.



LC- Diabetic Injection Belly Trainer



The soft stomach replica will be a valuable tool for teaching patients or students how to properly insert and rotate insulin pump infusers. Also perfect for diabetics to practice and overcome the fear of self-injection in daily life.

LC- Thigh Laceration Wound Packing Trainer Kit

The Thigh Laceration Wound Packing Trainer Kit provides realistic thigh laceration wound simulation and a complete set for comprehensive training.



LC- Laceration Wound Hemorrhage Control Trainer Kit

This model is an excellent way to demonstrate wound dressing and use it as a teaching model in emergency training.

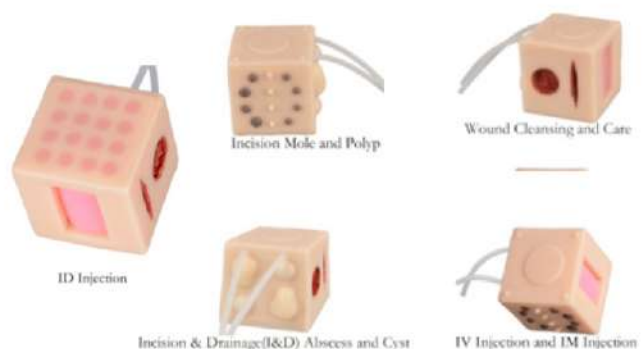


LC- Gunshot Wound Stop The Bleeding Training Kit



Get the Gunshot Wound Stop The Bleeding Training Kit to enhance the realism of wound packing when training. Support customization and wholesale.

LC- Multicube 6 Sides Simulation Model



This multi-purpose hands-on medical simulation cube is designed to practice essential clinical skills related to venipuncture, percutaneous injections, sinus wound care, etc. Support 6 sides

LC- Pediatric IV Arm for Venipuncture & Phlebotomy Training



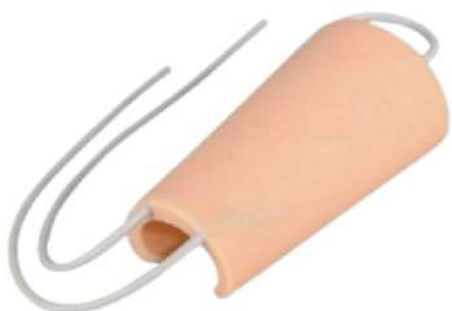
The pediatric IV simulation arm is so soft and perfect for newborn arm IV injection, catheter, and phlebotomy training. Help nervous nursing students, nurses, and doctors build confidence before performing IVs on real infants' arms.

LC- Pediatric IV Leg for Venipuncture & Phlebotomy Training



The newborn-sized infant IV leg is an exciting training aid for practising and demonstrating IV injection, IV phlebotomy, and IV catheter of the infant. Good for learning intravenous cannulation in neonates. Easily get realistic pediatric IV experience.

LC- Injection Training IV Arm Sleeve, Snap-on



Greatly simulates the blood vessels' position on the forearm. Realistic simulated dermatoglyphics. Snap-on design. Make the IV arm sleeve more convenient and advanced for injection & phlebotomy training.

LC- Injection Training IV Arm



The highly simulated IV & Phlebotomy arm provides a realistic multi-venous system(veins) for trainees to be trained in locating desired veins. A great aid assistant in injection, infusion, venipuncture, and phlebotomy courses.

LC- Female Urinary Catheterization Trainer

Female Urinary Catheterization Model is designed to teach urinary insertion techniques on female patient. Clear base, accurate female urethral anatomy - ensuring accurate procedures. Ideal for nursing and medical students.



LC- Male Urinary Catheterization Trainer

Male Urinary Catheterization Model is designed to teach urinary insertion techniques on male patient. Clear base, accurate male urethral anatomy - ensuring accurate procedures. Ideal for nursing, medical students, and school education.



LC- Intradermal Injection Practice Arm Simulator, 58 ID Spots

The injection arm simulator provides realistic training for intradermal injection through in-time small blisters or skin welt feedback. Used for nurse training and medical education.



Life/form® Advanced Breast Exam Simulator

The Life/form® Advanced Breast Exam Simulator offers unparalleled realism for teaching both clinical and self-breast examination. Its tissue density actually varies within the simulated breast, just as it does in a live patient.

Tumors of varying sizes (1-4 cm diameter), shapes (round, oval, irregular/stellate), and densities can be inserted by the instructor for an expanded combination of training scenarios.

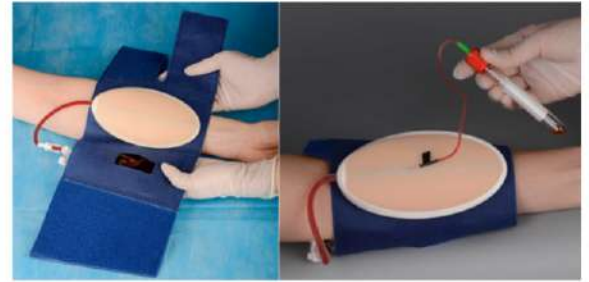
Tumors represent adenomas, cysts, malignant tumors, and enlarged lymph nodes. The torso is correctly positioned in the supine position and allows access to both axillae.

The trainer features palpable ribs, sternum and clavicles, and enlarged lymph nodes in the axillary and subclavicular areas. Peau d'orange ("orange peel skin") with inflammation, inverted nipple, skin dimpling, and asymmetry are also depicted on the incredibly realistic skin.



LC - One-Way IV Injection Practice Pad Model, Wearable on Forearm

One-way design. Ideal for venipuncture and IV catheter practice but not infusion. Consists of a wearable velcro and an IV injection pad embedded with a grey silicone tube, which becomes transparent outside and connected to an 80ml liquid bag.



LC - Dorsal Hand IV Trainer, Wearable/Portable for Practice



Comes with wearable velcro and a pocket design. Enables IV practice on the dorsal hand more conveniently, safely, comfortably, and affordable than other IV trainers.

LC - Detachable IV (Intravenous) Sleeve Trainer for IV Injection Practice



The detachable IV sleeve trainer provides safe, realistic, affordable intravenous (IV) injection training. Can be used on a live person or manikin. The silicone pad represents the soft tissue and the plastic part prevents needle puncture and injury.

- Upgraded Episiotomy Suturing Simulator



The obstetrics simulation is made for gynecology teaching training. The simulated female vulva anatomy model provides realistic birth injuries incision and suturing practice and wound care after vaginal births.

LC - Pocket Intradermal (ID) Injection Pad with 32 Training Spots



Simulate the skin wheal and bleb well. Ideal for nursing students and nurses to practice intradermal (ID) injection techniques. Lightweight and friendly for a backpack.

LC- Pocket SC Injection Practice Pad with White Thicker Sponge



Subcutaneous injection practices are available on both the top and bottom sides, two layers of silicone skin. Sponge in the middle layer, good for water absorption and drying. Durable and affordable for students and injection courses.

LC - 2 Times Magnified Detachable Brain Model



- Twice the size of the real brain, cut in the middle, and can be broken down into 4 parts. The anterior lobe and brain stem are removable. Shows the motor center, sensory center and functional center.
- Made of premium PVC material, which is highly durable and lightweight.
- Hand-painted, clearly shows the texture and characteristics of the brain surface
- Comes with a base for explanation and demonstration
- Can be used for patient education

LC- Knee Arthroscopy Model



The Arthroscopic Knee Trainer is ideal for ACL reconstruction either arthroscopically or open. Includes permanent soft tissue sleeve, replaceable ACL knee joint insert and all appropriate clamps.

LC - Shoulder Arthroscopy Model



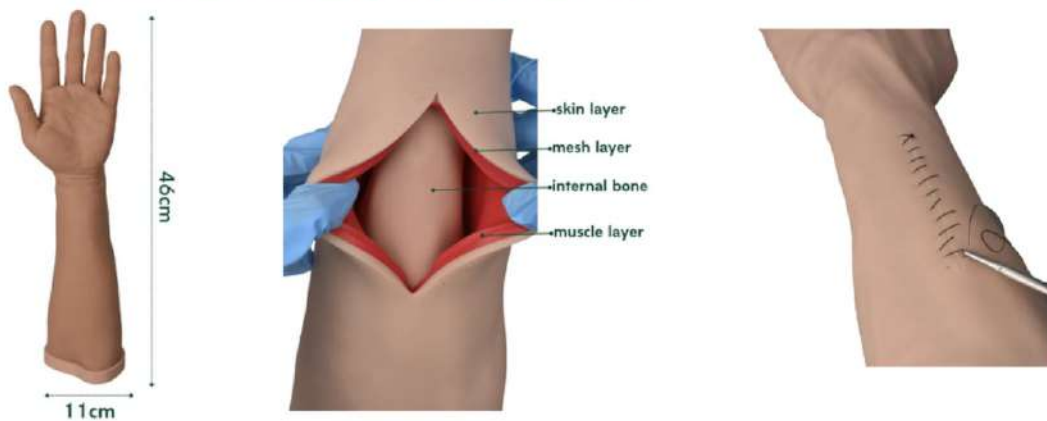
The Arthroscopic Shoulder Trainer is ideal for reconstruction either arthroscopically or open. Includes permanent soft tissue sleeve, replaceable joint and all appropriate clamps.

LC-H- 0327 Wearable Open Fracture Wound Packing Trainer



This innovative wearable trainer greatly simulates II-V open fractures and allows wearing on the leg or arm to practice immobilization and wound packing techniques in open fracture scenarios, enhancing emergency medical training.

LC-H- Hand Surgery Simulator



It is crafted for realistic hand surgery simulation. Perfect for DIY wound closure practice in various arm locations. Ideal for educational institutions and professional training

Features:

Realistic Construction:

Crafted from high-quality silicone, our suture practice arm replicates the look and feel of human skin, muscle, and bone.

Durable Mesh Layer:

The skin and muscle layers are reinforced with a durable mesh, ensuring longevity and sustained use. Each cut can be sutured several times.

Comprehensive Training:

Our suture arm is perfect for practicing suture and stapling etc wound closure techniques, and enhancing your suturing proficiency. Wounds can be inflicted by the instructor anywhere on the training arm and then students start to practice suture.

Ideal for Education and Training:

The arm surgery simulator is suitable for school teachings and professional training scenarios, providing a hands-on learning experience.

Two Skin Color Options: Light and dark skin are available and support customization.

LC-H- 044 Adult Male Circumcision Trainer



The realistic male circumcision simulator available in 3 skin tones, is great for perfect prophylactic and therapeutic male circumcision skills for medical professionals.

LC-H- 045 Miniature Gynecological Examination Simulator



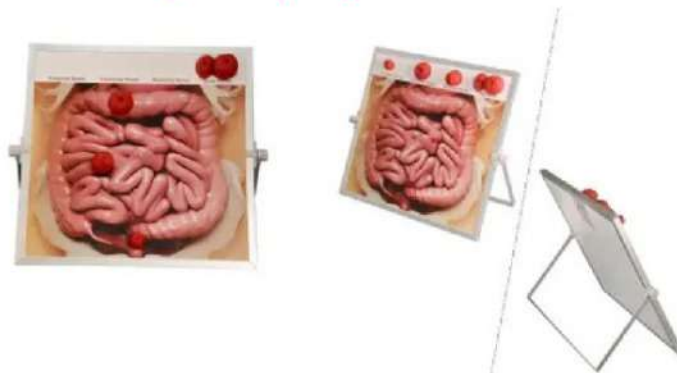
Ideal for medical training, this gynecological exam model offers realistic simulations with soft silicone. It prepares students and doctors-in-training for gynecology and general practice, featuring a stable acrylic base for illumination.

LC-H-502 3 Layer Silicone Pad with Arch Design



The arched suture pad simulates the human skin, resembles human flesh, and makes wounds DIY possible for medical students. Be able to practice suturing any wounds. Feel free to get discounts for bulk orders, or get our professional one-stop solution.

LC-H-200 Ostomy Display Board



The ostomy model kit is designed to demonstrate and teach ostomy care on a tabletop or wall display. Provides four kinds of stoma and a whiteboard with a high-definition intestinal anatomy diagram to better explain and practice stoma care procedures.

LC-H-151 Osteoporosis Model (Femur & 4 Vertebrae)



Consists of an osteoporosis femur model and an osteoporosis vertebrae model. The well-crafted and dedicated designed medical skeleton trauma anatomy instruments are great for school teaching, learning display, collection, and lab supplies.

LC-H-141 Female Vulva Incision Suture Training Model



This female wound suturing model is designed for 3-set vulva incision demonstration and Episiotomy & Perineal Suture Training. Made of soft silicone and ideal for nursing institutes, medical colleges, and hospitals to use as a teaching & practice tool.

LC-H-331 Infant Airway Management Model



This realistic model of infant airway intubation replicating the anatomical structures of infant nasal and oral airways, can be used for teaching and training of endotracheal intubation in safe environments.

LC-H-028 Episiotomy Suturing Simulator

The obstetrics simulation is made for gynecology teaching training. The simulated female vulva anatomy model provides realistic birth injuries incision and suturing practice and wound care after vaginal births.



LC-H-4220 LDL Blood Vessel Comparison Model



The dynamic Atherosclerosis model with LDL clearly shows the blood vessels from health to illness. Ideal for doctor-patient education. Help better understand the damage of LDL on blood vessels.

LC- Child Rescue Choking Vest



Provides a Realistic Method for Teaching To train both beginners and more advanced students. Can also be used with black blows

LC- Adult Rescue Choking Vest



Provides a Realistic Method for Teaching To train both beginners and more advanced students. Can also be used with black blows

LC- Infant Auscultation Manikin



Contains normal and abnormal heart sounds, breath sounds, bowel sounds and vascular murmurs of infant. Work together with electronic stethoscope.

LC- Neonatal Peripheral and Central Vein Intubation Simulator

1. Transparent chest wall and made of special material, perspective effect of bilateral venous channel;
2. Correct anatomical position: basilic vein, cephalic vein, jugular vein, subclavian vein and superior vena;
3. Direct observation of rib and heart, measure the correct inserted length of catheter;
4. Transparent part of the superior vena and visible of the ductal position in the case of correct catheterization, or the catheter is invisible;
5. Exercise of standard venous catheterization position;

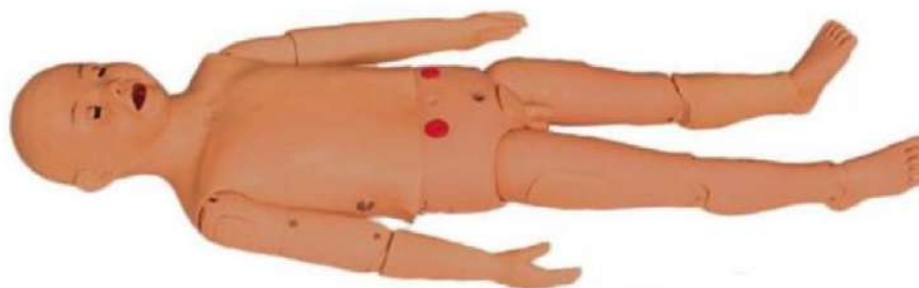


LC- CPR Training Manikin



Simulates standard, open airway, external breast compression, intensity display of corrects. The yellow indicator light indicates a less deep compression; red light indicates a too deep compression; a green light and buzzing sound indicates correct depth.

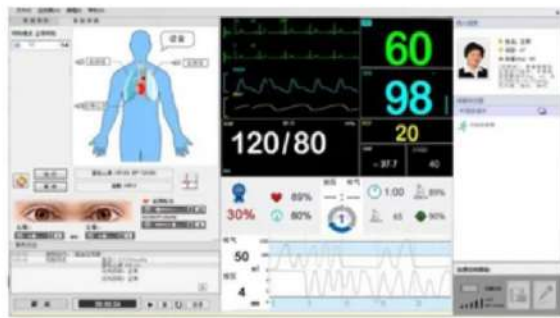
LC-H-201 Five Year Old Child Nursing Manikin with CPR



Features:

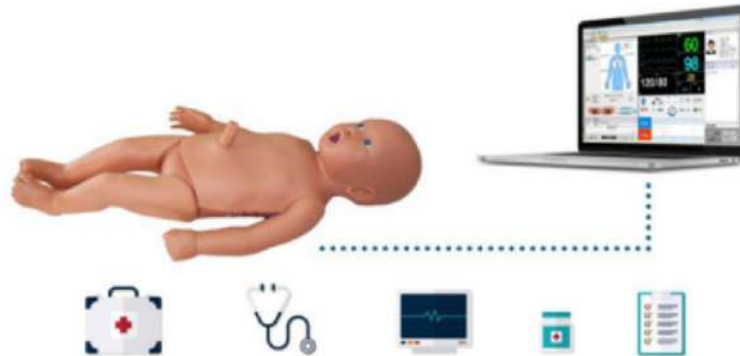
1. Simulate pupils: one normal and the other mydriasis for pupils contrast teaching demonstration
2. Simulates artery pulse including carotid pulse, radial pulse and femoral pulse; supports tracheotomy care.
3. Comes with realistic mouth, nose, tongue, throat, esophagus and trachea, supports trachea cannula via mouth and oxygen inhalation, etc.
4. Nasal feeding: insert the nasal feeding tube via the nose for gastrointestinal decompression, nasal feeding and gastric lavage.
5. CPR: support ventilation ways: mouth to mouth, BVM to mouth; electronic monitoring of insufflation frequency and volume, compression frequency and depth; insufflation or compression can be trained separately.
6. Venous transfusion, including arm veins, femoral veins and dorsal veins of foot.
7. Subcutaneous injection at bilateral deltoids, and intramuscular injection at vastus lateralis muscle and gluteus maximus.
8. Supports male/female urthelial catheterization and enema operation; and the genitals are replaceable.
9. Ileostomy, colostomy and bladder stoma care.
10. Bone marrow puncture: puncture via tibia, where medicine can be injected.

LC- Sim380 Advanced ACLS Manikin (Wireless)



- 1) Represents of an Asian adult male with accurate anatomical structures, and supports wireless manipulation;
- 2) Powered by built-in lithium battery, allows to set all kinds of breathing modes and connect to real ECG and real
- defibrillation pacing monitor, which is suitable for treatments during various transportation environments.
- 3) Comes with complete oronasal cavity, airway and esophagus; supports cricothyrotomy endotracheal intubation;
- supports chest rise.
- 4) With external compression detector, dynamic curves of compression depth, compression sites and compression
- frequency can be showed in real time with records and assessment.
- Simulated Training for Acute and Critical Adult Rescue:
- Main devices for adult emergency skills training: one advanced computer, one intelligent adult emergency manikin, one
- multi-parameter monitor and one defibrillator. And other common advanced rescue devices and emergency medicine.

LC- Neonatal ACLS Emergency Training Manikin (Wired)



- Vital signs simulation: pupils (one normal and the other mydriasis), femoral pulse, brachial pulse and radial pulse, etc.
- Airway management: realistic mouth, nose, tongue, gingiva, pharynx, esophagus and epiglottis, supports endotracheal intubation, sputum suction, gastric intubation.
- NIBP measurement, intramuscular injection, bone marrow puncture, venous transfusion, venepuncture.
- Cardiopulmonary auscultation.
- CPR training. Real and simulative defibrillation, pace-making and ECG monitoring.
- Umbilical nursing and neonatal nursing operation, etc.

LC- Child Auscultation Manikin



Features:

- Normal and abnormal heart sounds, breath sounds, bowel sounds and vascular murmurs can be auscultated on each manikin
- Work together with electronic stethoscope

LC - Advanced Full Body CPR & Obstruction Training Manikin



• Features:

- 1. Accurate anatomical features, realistic feeling, natural complexion, and perfect appearance
- 2. Manikin connects to the electronic monitor via compression and ventilation duct.
- 3. Manikin vital signs:
 - 1) Initial state: manikin's pupil mydriasis and no carotid pulse
 - 2) After successful rescue: manikin's pupil recover, and carotid pulse begin self-pulsation
- 4. Manikin's left shoulder supports consciousness judgement, and the result can be printed on the report after operation
- 5. Simulate airway opening, and the relative green light on the monitor will be triggered once the airway is open.
- 6. CPR operating modes: CPR Training, CPR Popularization and CPR Assessment:
- 7. Electronic monitoring: the electronic lights monitor the airway opening, compression sites (including one correct position and four wrong positions), times of correct and wrong artificial respiration and external chest compression.
- 8. Bar code shows the volume of insufflation: correct value should be 500 - 600ml.
 - 1) insufficient blowing, the bar code is yellow,
 - 2) proper blowing, the bar code is green,
 - 3) excessive blowing, the bar code is red.
- Bar code shows the compression depth: correct value should be 5cm - 6cm.
 - 1) Insufficient compression depth, the bar code is yellow,
 - 2) proper compression depth, the bar code is green,
 - 3) excessive compression depth, the bar code is red.
- English voices prompts during the whole process and the volume is adjustable.
- Compression frequency: 100-120 times/minute
- Remote control can be used to reset, playback and simulate emergency call, pulse check, foreign body removal and breathing judgement, etc.
- Power state: adopts 220V external power source, which can be used for both manikin and electronic monitor.

LC- Limbs Fracture First-Aid External Fixation Simulation Standardized Patient



- Features:
- Imulates head trauma and limbs closed fracture, students can be familiar with symptoms of malformation, bony crepitus and abnormal motion and so on, and they can make diagnosis and treatment.
- Master the operating skills of wounds rinsing, disinfection, binding up, restoration, fracture fixation and transport, which has great clinical meaning for surgical trauma first-aid skills training.
- Trauma includes radius and ulna closed fractures (upper forearm), Tibia and fibula closed fractures trauma (lower limbs), and thigh compound trauma. The end of fracture is touchable, fracture-angle abnormality, and comes with feeling of bone friction.
- Mandible trauma modules: open jaw trauma modules, and wound management can be done for the jaw.
- Basic nursing function: I.V. Injection, urethral catheterization, etc.
- All types of brace can be used with this manikin.
- Can be widely used for emergency teaching demonstration and actual practice.

LC - Abdominal Palpation Manikin



Features:

1. Elective palpation positions and experience of different symptoms
2. Palpation: liver palpation, spleen palpation, gallbladder palpation and syntheses palpation, frequent disease tenderness and rebound tenderness.

LC - Transparent Male Catheterization Simulator



Features:

- 1. We design this simulator basing on the normal human anatomy.
- 2. The external genitalia are lifelike. Students can observe the organs in the pelvis, such as bladder, rectum.
- 3. The whole catheterization process can be seen because of the transparent abdominal wall.
- 4. The resistance will be felt when intubating just as in real human. The external Genitalia can be replaced.

LC- Transparent Female Catheterization Simulator



Features:

- 1. We design this simulator basing on normal human anatomy.
- 2. The external genitalia are lifelike. Students can observe the organs in the pelvis, such as bladder, uterus and rectum.
- 3. The whole catheterization process can be seen because of the transparent abdominal wall.
- 4. The resistance will be felt when intubating just as in real human. The external genitalia can be replaced.

LC- Pitting Edema Training Model



1. Observe how long the pitting is present after the release of indentation depth and pressure decides and grade it subjectively; e.g. renal edema, cardiac edema, etc.
2. Shows 4 stages:
 - Stage I, mild depression, slight indentation (2mm), no obvious swell;
 - Stage II, moderate depression, indentation (4mm) disappear rapidly;
 - Stage III, deep depression, indentation (6mm) lasts for a while only, small swell area;
 - Stage IV, severe depression, indentation (8mm) lasts for a long time, very large swell area.

LC- Postpartum Basic Nursing and Breast Feeding Manikin



Features:

- 1) Standard adult manikin with flexible joints, which can meet all kinds of body positions
- 2) Comes with: torso-rotation, stretch; neck-rotation, flex, lateral bending; shoulder and hip-adduction, abduction, rotation, flex; elbow-medial rotation, outer rotation; knee- medial rotation, outer rotation; wrist- medial rotation, flex, stretch, bend; ankle- varus, ectropion, adduction and abduction.
- 3) Supports sponge bath on bed; change clothes; help "patient" move to bedside; use wheelchair, flatcar or stretcher to move and carry the "patient"; axis turning methods, limbs constraint methods, shoulder constraint methods, general constraint method; etc. Pupils observation: normal and mydriasis; aural nursing, oral nursing, tracheotomy postoperative nursing, oxygen inhalation and aerosol inhalation; BP measurement training.
- 4) Supports intramuscular injection: modules locate in the left and right upper arms and buttocks; real soup can be injected into the modules; and modules can be taken off for rinse; Ileum fistula on the abdominal wall connected to a liquid-collecting bottled for ostomy care Supports breast feeding
- 5) With all basic nursing functions and additional postpartum care and breast feeding function, the manikin simulates multiple symptoms of breast during lactation period: breast swelling, milk overflow, breast pain and sucking practice. Supports interchangeable male/female urethral catheterization, indwelling catheter and bladder irrigation, and simulative urine can be seen after successful catheterization.
- 6) Supports clyster: mass non-retention clysis, little non-retention clysis, cleansing enema, and retention enema.

The embedded breast module is detachable and interchangeable, and comes with all kinds of breast tumors, lymph gland, lobular hyperplasia for inspection and palpation.

The embedded lumbar puncture module is realistic and replaceable, and it allows repeated training.

LC- Breast Examination Model



Features:

1. Consists of 3 breast models at different sizes, with high simulation, soft skin and realistic touch feeling.
2. Can be used for breast Examination



ARLET Towers, Murinjapalam Jn., Medical College P. O.
Thiruvananthapuram-695 011, Kerala, India,
Ph: +91 9387506000, +91 9497506000
E-mail: caretvpm@gmail.com
www.lifecareindia.in